

SDR 87/2008

19 June 2008

Living in Wales 2007

The Living in Wales Survey is the main general source of statistical information about households in Wales. The survey is carried out annually and this Release presents a selection of the latest 2007 results for the first time.

Background

The Living in Wales Survey is carried out by Ipsos MORI for the Welsh Assembly Government. It is a series of annual household surveys that will eventually cover the years 2004 to 2008. They are carried out as a face-to-face interview with the household reference person (HRP) or another appropriate adult. The 2007 survey covers a sample of almost 7,800 households in Wales.

A separate property survey was carried out in 2004, with another scheduled for 2008. These property surveys are the main source of information about the condition of homes in Wales and, as the homes have already taken part in the household survey, a rich source of information on the homes in Wales and their occupants. The property survey is conducted by a qualified surveyor.

The Citizen Survey is an integral part of the Living in Wales Household Survey. It provides the most up-to-date information about citizen's views of public services in Wales. The topics covered for 2007 include train services; further education; a range of health services including patient transport, dental services, A&E services, and ambulance services; it also covers library and street cleaning services provided by local government. This Release does not report on the Citizen Survey. A full report for each service area will be available during the Winter 2008.

Topics covered in this Release

This Release uses a combination of text, charts and a few tables to show a selection of some of the results available for the topics covered in the main part of the Living in Wales Survey. The data and tables that underpin these results are shown on a set of associated Excel workbooks that can be accessed over the Internet.

The following sections of this Release cover each of the topics in the survey in turn. Each section starts with a summary and then shows a small amount of the information that is available. A series of reports with more in-depth analysis of many of these topics will be released as Statistical Bulletins, and in other ways, during the Autumn and Winter of 2008.

Contact: Tel: 029 2082 5208 **E-mail:** stats.transport@wales.gsi.gov.uk **Next Update:** March 2009 (provisional)



The topics covered in the household part of the survey can vary from year-to-year. The topics for 2007 that are covered in the sections below are:

- **General information**
- **Internet:** Internet and broadband access to households; internet usage by individuals.
- **Equality issues:** Social attitudes of respondents; the experience of discrimination, harassment or victimisation.
- **Environment:** Households' actions to reduce their impact on the environment.
- **Providing care:** Providing special care for others.
- **Volunteering:** Helping people, volunteering for groups, clubs or organisations.
- **Transport:** Use of public transport, walking and cycling; accessibility of bus transport; concessionary bus passes.
- **Housing tenure:** By household type and by socio-economic class.
- **Overcrowding:** Households that fail the "bedroom standard".
- **Disability and long-term illness:** The adaptations needed to their homes to help the household to cope.
- **The economy of households:** Savings; working and workless households; dependent children in workless households.
- **Older people's housing:** Tenure; for owner occupiers, how their home was bought; for older people with long term illness or disability, their type of disability.
- **Value and opinions:** What issues are important in respondents' lives; how respondents rate their area as a place to bring up children; their attitudes to their neighbourhood and why like or dislike living there.
- **Housing finance:** for owner occupiers with a mortgage, when the mortgage was taken out, and how much was it for; for renters, the average monthly rent.

Further information

Further information is available from the Living in Wales web pages:

<http://www.wales.gov.uk/livinginwalesurvey>

If you require any further information about using the data collected by the Living in Wales survey, then please contact the Local Government Data Unit ~ Wales (Data Unit).

The contact point at the Data Unit for requests for statistics or access to databases on the Living in Wales survey is:

Lisa Walters
Local Government Data Unit ~ Wales
3 - 7 Columbus Walk
Cardiff,
CF10 4SD
Telephone number: 029 2090 9548
E-mail: surveys@dataunitwales.gov.uk

General Information

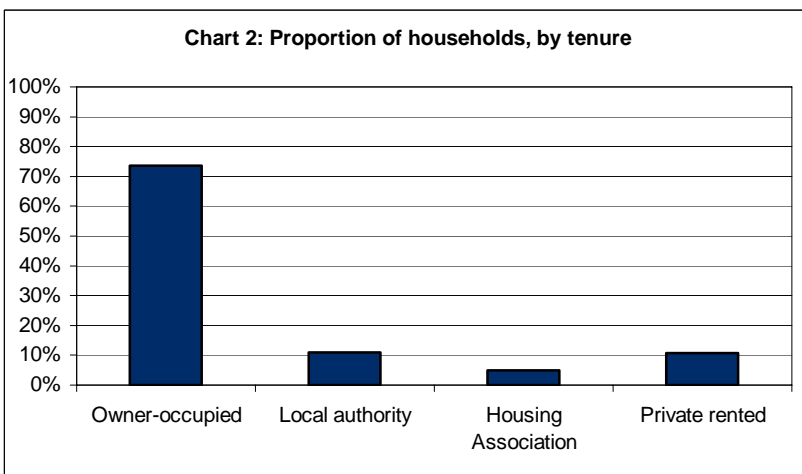
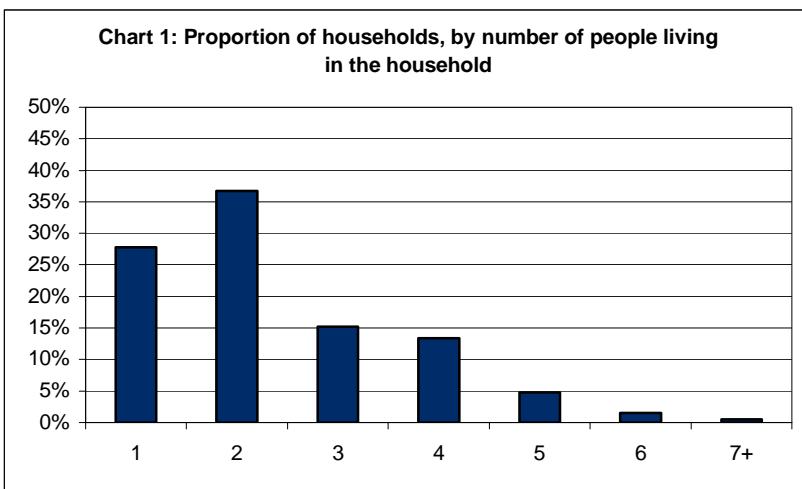
As well as collecting specific information about individual topics, the Living in Wales Survey collects general information about the household and the respondent, together with some information about all the people living in the household and the address. The information collected in the survey is also used to compile general classificatory information.

Examples of this sort of data include:

- For individuals: The number of people in the household, their sex and age, their ethnicity, national identity, religion and whether or not they speak Welsh.
- For the respondents (and their partner/spouse, if any) the survey can be used to show information about: Employment status, details about their income and benefits.
- For the household as a whole, the survey shows: Tenure, household type, socio-economic class of the "Household Reference Person", and household income and savings.

The survey results are also geo-coded, which means that (dependent on sufficient responses) they can be analysed by local authority area, by type of area (rural, urban etc), and by other spatial areas of interest.

Charts 1 and 2 below show the general results from the Living in Wales Survey 2007 for two of these variables: The number of people in the household, and tenure. Many of the classificatory variables mentioned above are used to analyse information for the individual topics for 2007, as set out in the following sections.

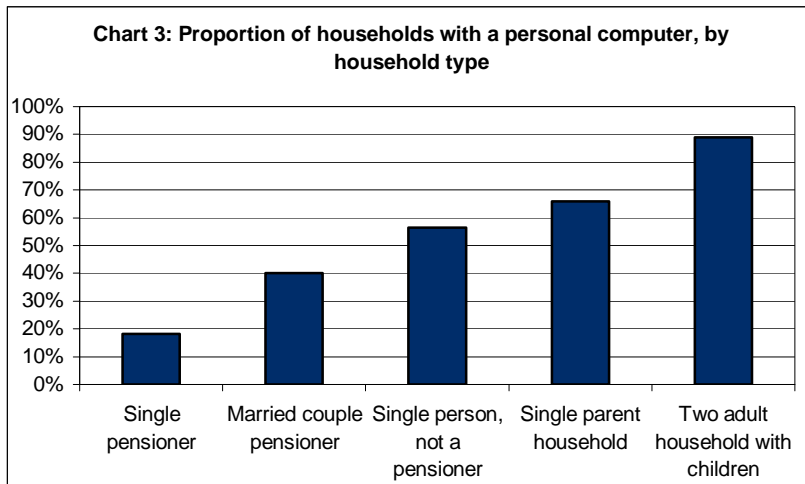


- For 2007 the achieved sample size was 7,753 households, which when grossed produced an overall household estimate of 1,261,000 households and a population of 2,999,600 people.
- The average number of people per household was 2.38.
- The majority (74%) of households owned their property.
- Local authority owned homes and privately rented homes account for 11% each of the homes in Wales, with a further five per cent being housing association owned.

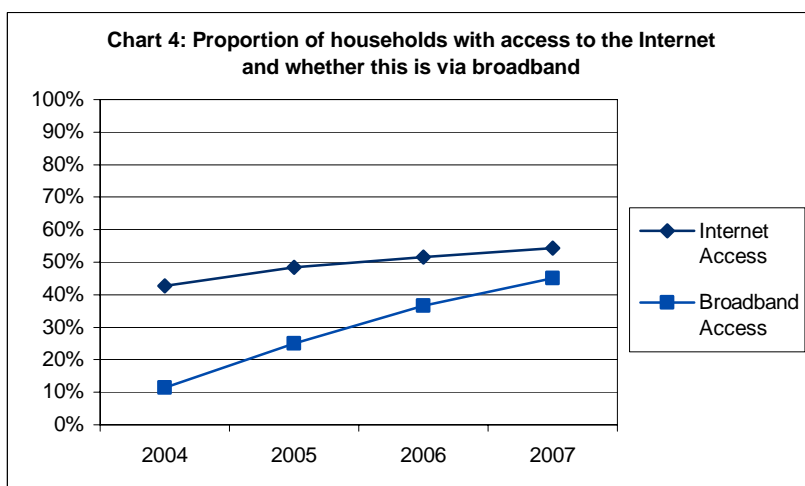
Internet Usage

The Living in Wales survey collects data on several different areas to do with the Internet, for example Internet/broadband access, Internet usage, computer access/usage, computer knowledge, broadband speed and the technology type used to receive the Internet .

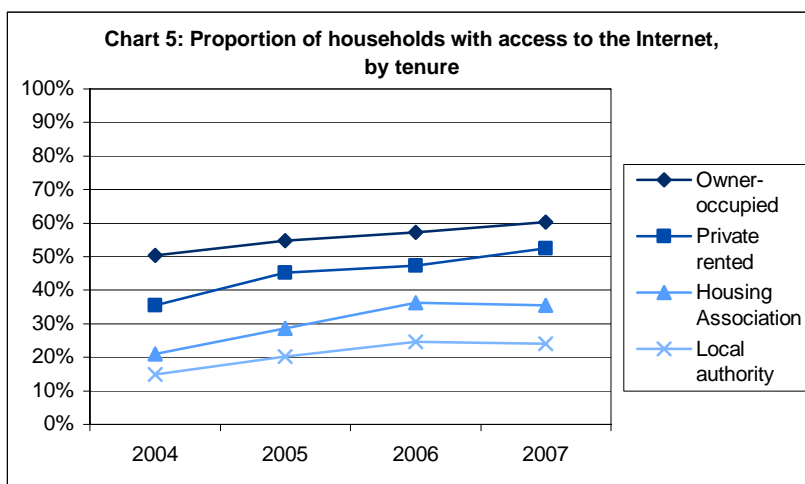
A selection of the information available from the survey results is shown below:



- 63% of households had a personal computer in 2007. Of these, 86% of households had Internet access at home; out of households with Internet access some 84% stated this was via broadband.
- 13% of single pensioner households have Internet access at home, compared with 84% of households with two adults and one or two dependent children.

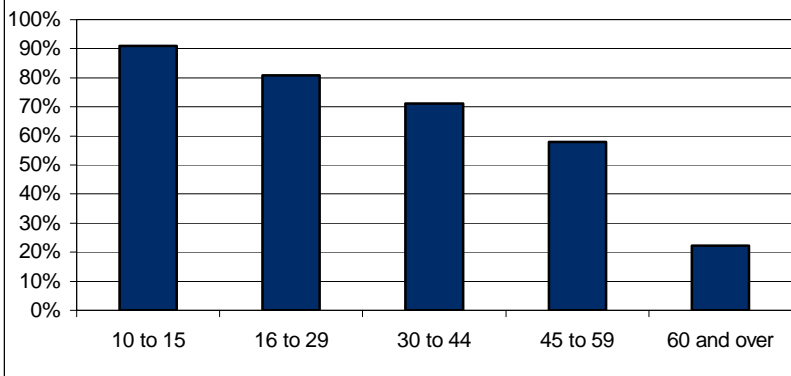


- Chart 4 shows that the percentage of households with broadband Internet access has increased from 12% in 2004 to 45% in 2007.
- There has been a slower percentage increase in the proportion of households with Internet access as a whole, as broadband replaces other types of connection to the Internet. The total proportion of households with Internet access has risen from 43% in 2004 to 54% in 2007.



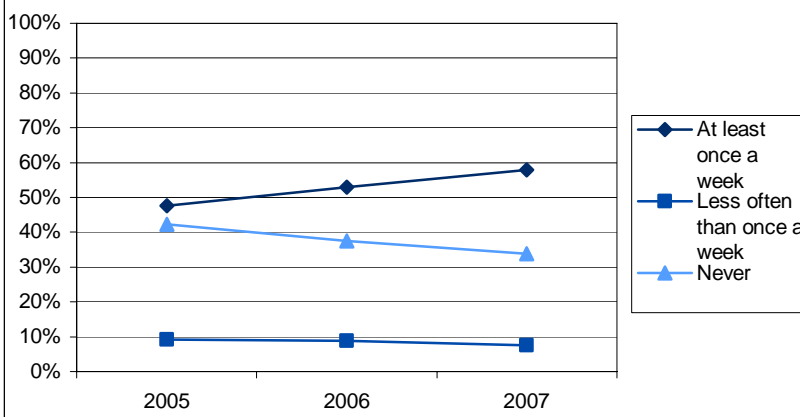
- Chart 5 shows that owner-occupied households are more likely to have Internet access than other tenures.
- The proportions of housing association and local authority households with Internet access changed little between 2006 and 2007.

Chart 6: Proportion of people aged 10 or over who access the Internet at least once a week, by age group



- It was reported that 44% of persons aged 10 or over, accessed the Internet, at home, work or elsewhere, on most days. On average, 58% of respondents did so at least once a week.
- Chart 6 shows that the proportion of individuals accessing the Internet at least once a week decreases with age.

Chart 7: Frequency of Internet usage by people aged 10 or over



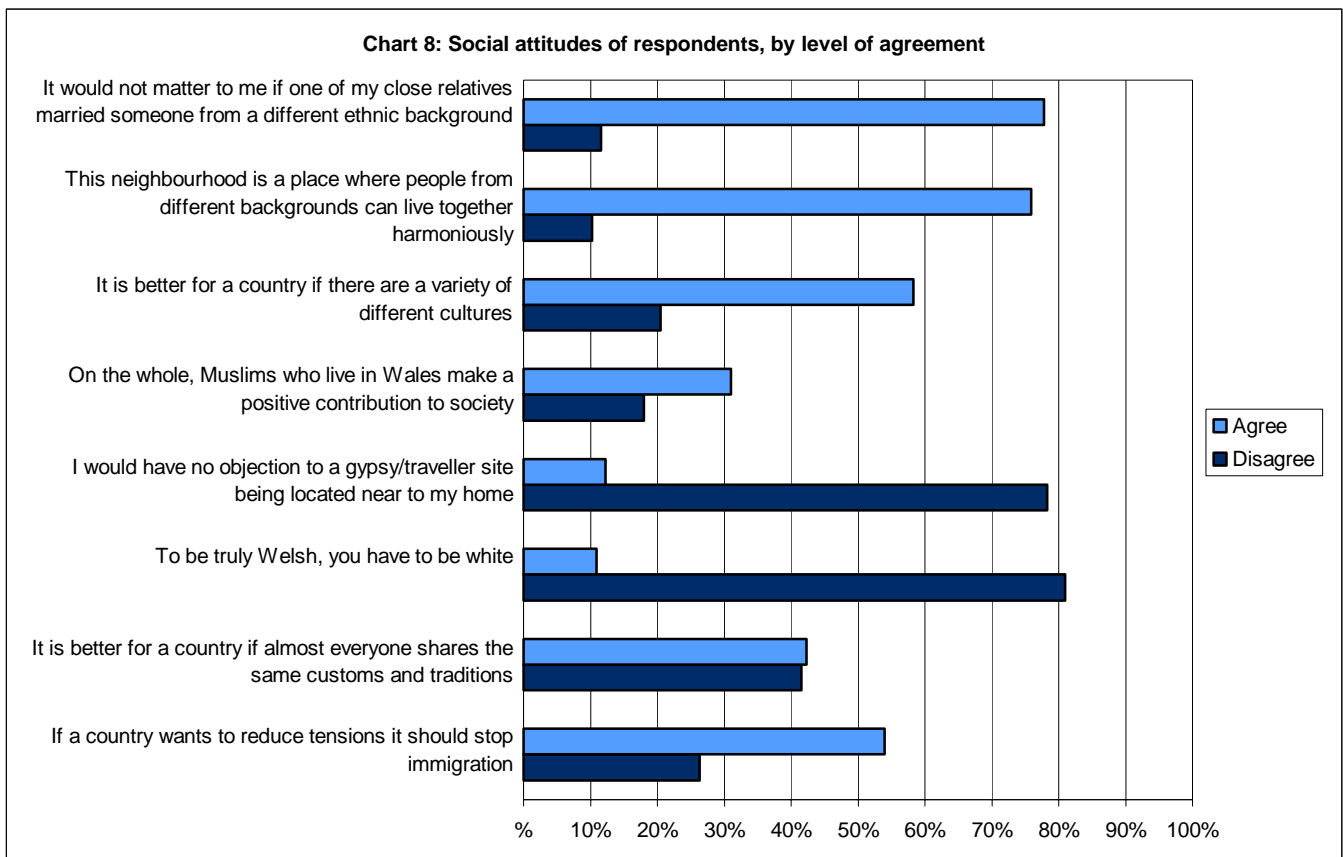
- Chart 7 shows the proportion of persons aged 10 and over that never use the Internet has fallen by nine percentage points in two years.
- In more detail, in 2007, five per cent of 10 to 19 year olds never use the Internet at home, work or elsewhere, compared to 85% of those aged 70 and over.

- The Living in Wales survey also collects some information about why some respondents did not have a personal computer at home. For example, of those households without a personal computer, 80% of respondents in that group stated that they had no interest or don't need one, and 12% stated it was too expensive (respondents could state more than one reason).

Equality Issues

The Living in Wales survey collects data on several different areas to do with equality issues, for example social attitudes and various data to do with discrimination, harassment or victimisation. A selection of the information available from the survey results is shown below:

Chart 8 shows respondents' attitudes towards the statements shown on the left of the chart. The results do not include those with no opinion on the statement or those that stated "Neither agree nor disagree". For this chart, "Agree" covers those who stated "strongly agree" and "tend to agree", and "disagree" covers those who stated "strongly disagree" and "tend to disagree".



- 77% of respondents stated that it would not matter to them if their close relatives married someone from a different ethnic background, and 76% agreed that their neighbourhood is a place where people from different backgrounds can live together harmoniously.
- Whilst only 11% of respondents believe you have to be white to be truly Welsh, over half of respondents agree that if a country wants to reduce tensions it should stop immigration.

Table 1 summarises respondents' statements about their experience of discrimination.

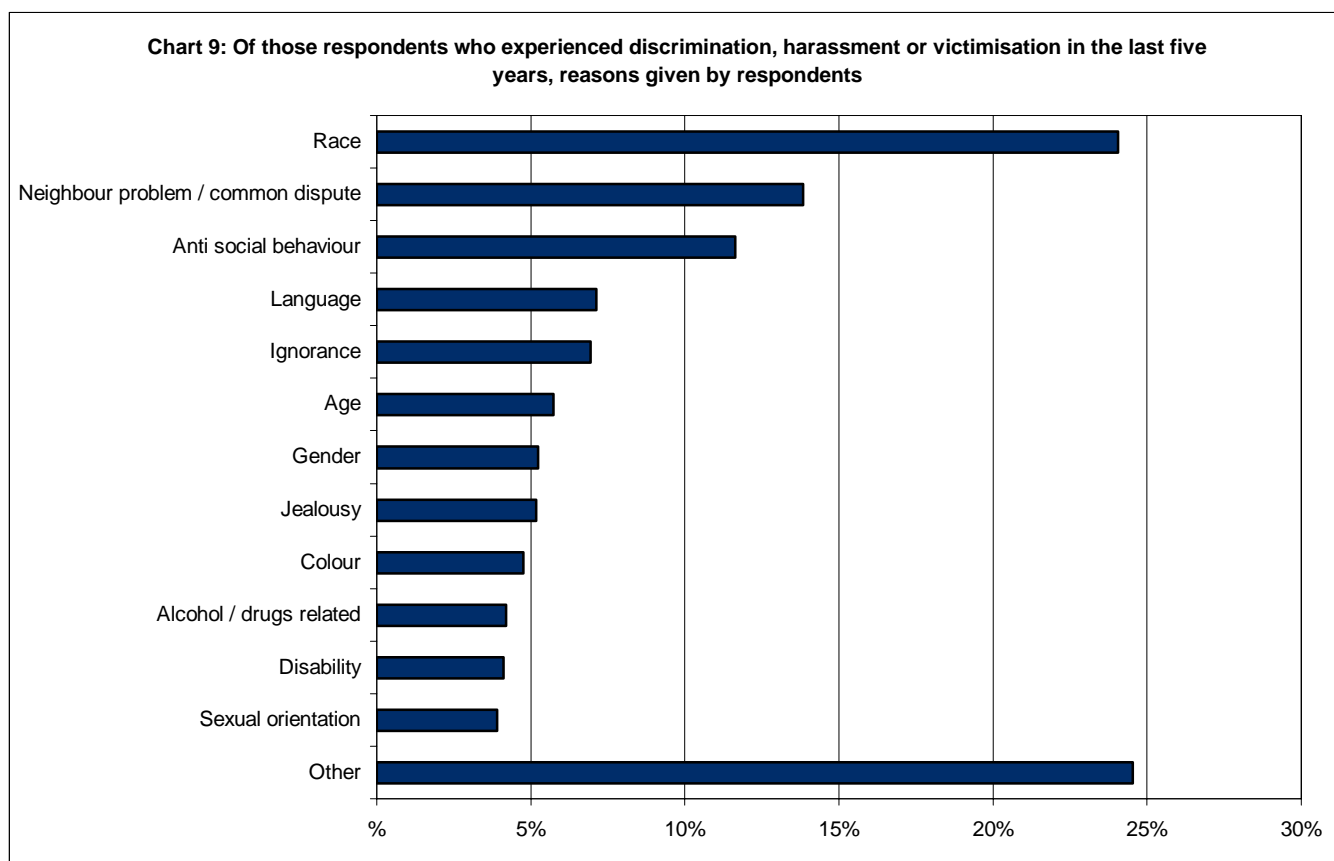
Table 1: Experience of discrimination, harassment or victimisation of respondents in the last 5 years, by age

	Yes	No	Don't know	Total
Adolescents & young adults (aged 16-24)	17%	83%	1%	100%
Adults (aged 25-59/64)	14%	85%	0%	100%
Pensioners (60/65+)	5%	94%	1%	100%
Total	12%	88%	0%	100%

Weighted total: 1,261,000 Source: Living in Wales survey 2007

- It suggests that this experience varies by age; overall, 12% of respondents have experienced discrimination, harassment or victimisation in the last five years. This ranges, however, from 17% of those aged 16 to 24, to five per cent of pensioners.

Chart 9 shows, for those respondents who stated they had experienced some form of discrimination, their assessments of the reasons for this.

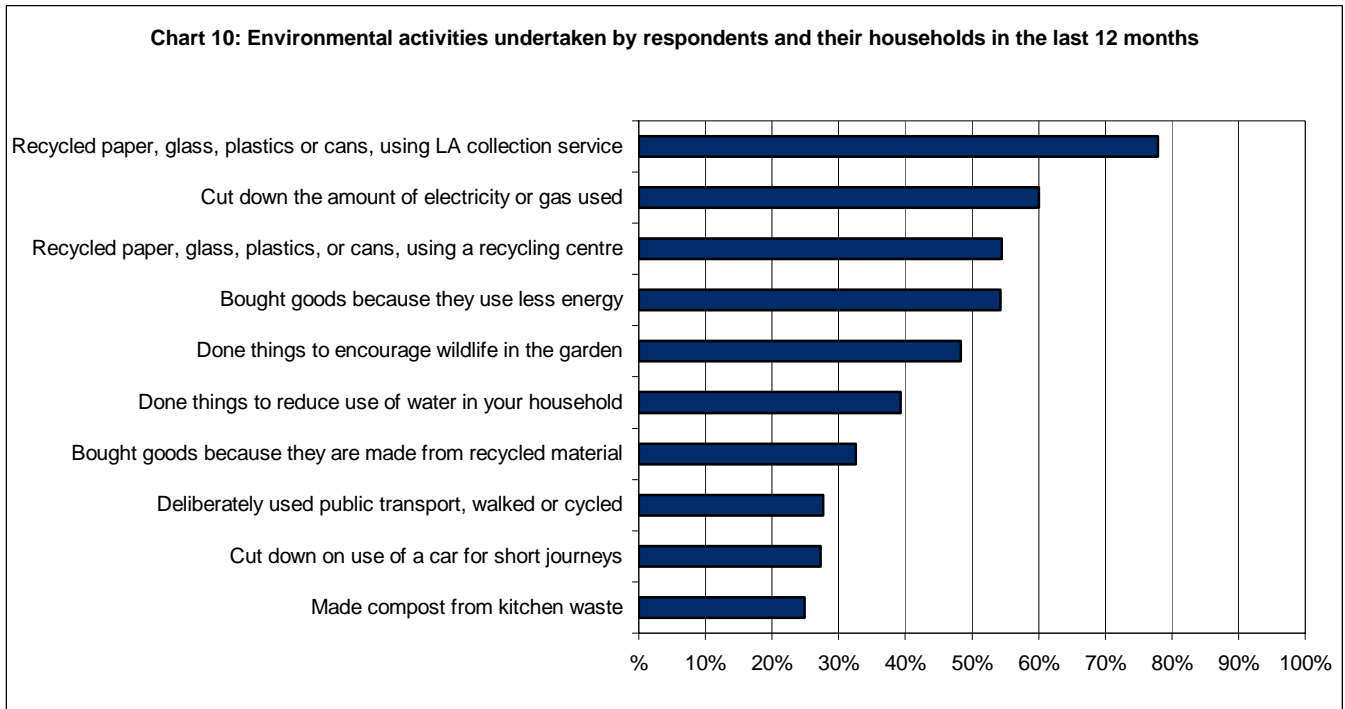


- Of those respondents who had experienced discrimination, harassment or victimisation in the last five years, apart from "Other", race (24%) was the most commonly selected reason. This was followed by problems with neighbours or common disputes and anti-social behaviour. Respondents were able to provide more than one answer.
- Other information collected in the Living in Wales survey shows, of those respondents who had experienced any form of discrimination, harassment or victimisation, 45% of them reported the incident. Of those who reported the incident, 62% did so to the police, 19% reported it to the local authority and a further 16% reported it to their employer or someone at work.

Environment

The Living in Wales survey collects data on households' actions to reduce their impact on the environment, e.g. recycling, reducing electricity/gas usage, and so on. Respondents were able to provide more than one answer.

A selection of the information available from the survey results is shown below:



- 78% of respondents and their households recycle, using their local authority collection service. This proportion ranged from 81% for pensioners, down to 64% for those respondents aged 16 to 24.
- 28% of respondents and their households deliberately used public transport, walked or cycled in the last 12 months, while 27% of respondents cut down on their use of car for short journeys.
- Only 4% of respondents and their households stated they had not done any of the activities listed above in the last 12 months.

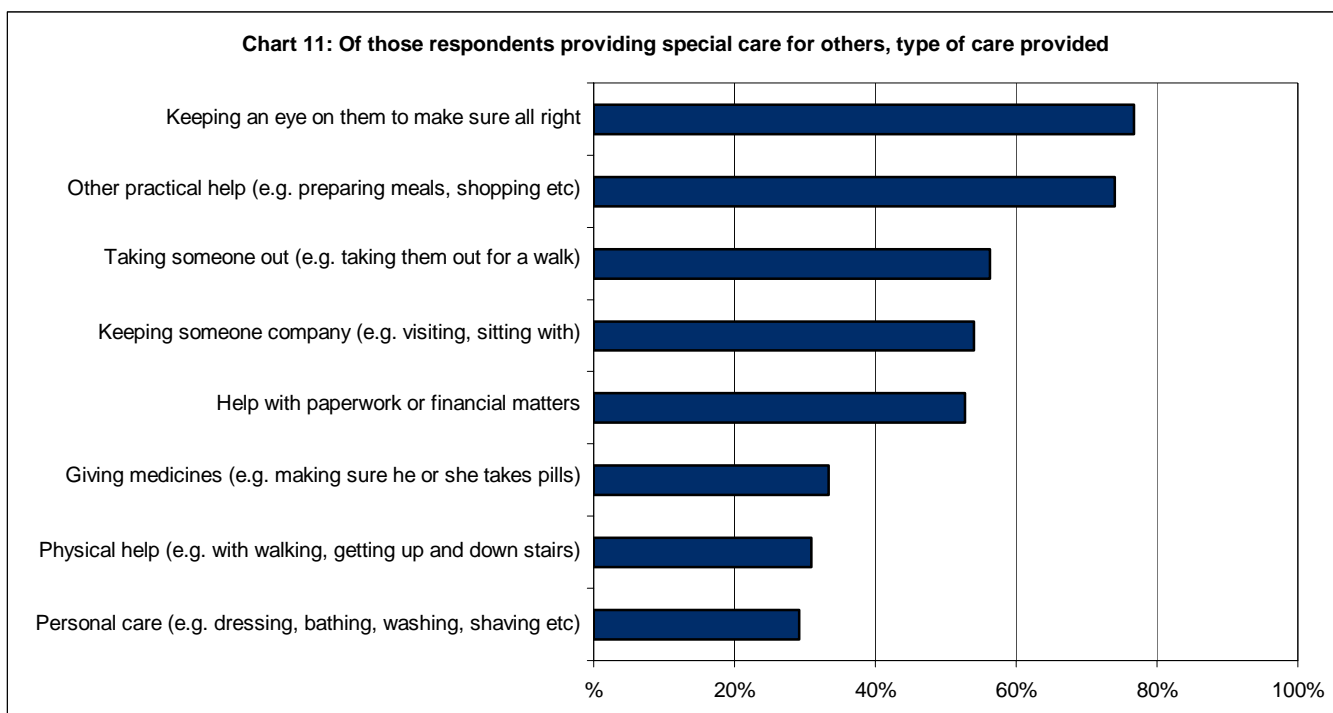
Providing Care

The Living in Wales survey collects data on several different areas to do with volunteering; one area is providing special care for other people.

Below is a selection of the information available from the survey results is shown below::

Overall, nine per cent of respondents provide special care for others. Most of these – eight per cent of all respondents – provide care for one person, while a further one per cent provides care for two or more people.

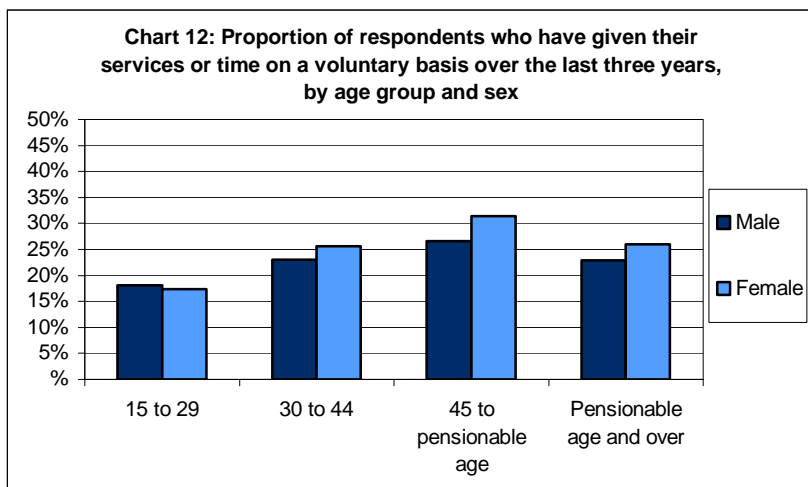
Chart 11 shows the type of care this group of respondents provides. Respondents were able to provide more than one answer.



- Respondents could provide more than one type of care so the totals can add up to more than 100%. In fact, the chart shows that, of those respondents providing care for others, they generally provide several different types of care.
- Nearly three out of ten of those respondents provide the most intensive level of personal care, by helping with dressing, bathing, washing, shaving and so on.
- Three quarters of those respondents were providing practical care for others at a less intensive level, by helping preparing meals, shopping and so on.

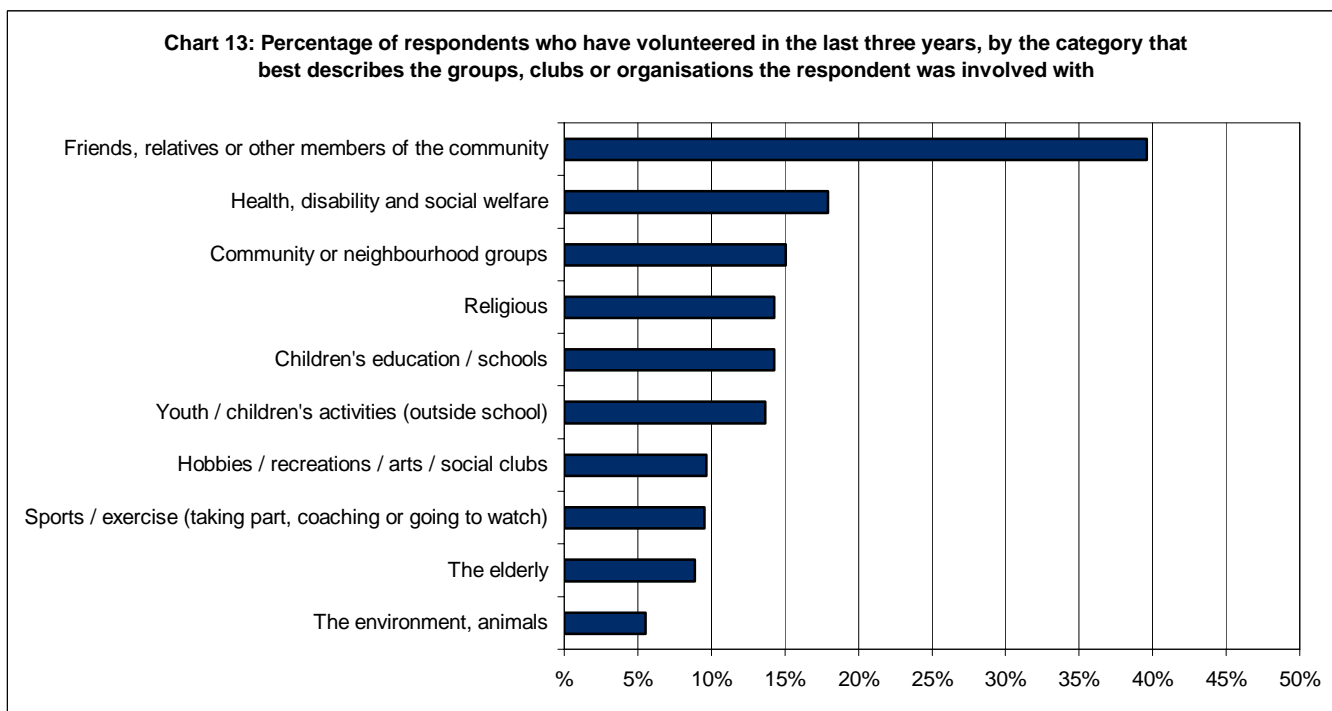
Volunteering

The Living in Wales survey also provides more general information about volunteering to help people, clubs and organisations. Overall, a quarter of all respondents volunteered in the last three years.



- Chart 12 shows that a higher proportion of female respondents volunteered in the last three years, compared with male respondents (other than in the 16-29 group).
- The highest rates of volunteering were among those aged between 45 and pensionable age.

Chart 14 concentrates on respondents who have volunteered at any point in the last three years. It shows the ten most common categories of volunteering, which best describes the group, club or organisation respondents were involved with. Respondents were able to provide more than one answer.



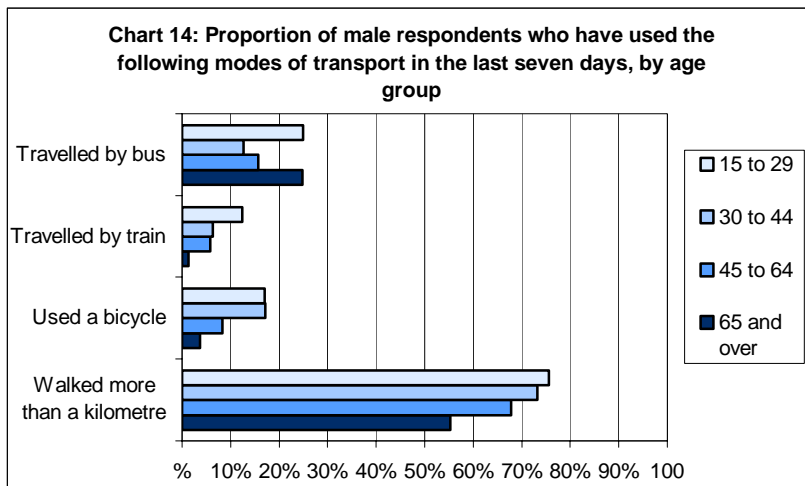
- More detailed information, not shown in the chart, suggests that male respondents who have given their services or time on a voluntary basis in the last three years are more likely than females to have been involved in groups categorised as “sports/exercise” or “hobbies, recreations/arts/social clubs”.
- Female respondents who have given their services or time on a voluntary basis in the last three years are more likely than males to have been involved in children’s education, youth/children’s activities, health, disability and social welfare or with religious groups.

Transport

The Living in Wales survey collects data on several different areas to do with transport, for example travelling to work, public transport, walking and cycling and concessionary fares.

Below is a selection of the information available from the survey results is shown below::

- The survey collects information about journeys to work. This shows that of those respondents employed, 73% use the car as their main mode of transport to work. 12% of respondents who are employed usually walk to work, while four per cent usually take the bus.
- The survey also collects information about how respondents use more “sustainable” transport options, i.e. travel by bus, train, used a bicycle and also walking more than a kilometre. Respondents were able to choose more than one mode of transport. This is shown in Charts 15 and 16 below:



These two charts show:

- A greater proportion of male than female respondents walked more than a kilometre in the last seven days.
- A greater proportion of female than male respondents used the bus in the last seven days.
- More than half of male respondents aged 65 or over walked more than a kilometre in the last seven days.
- One in every six of male respondents aged under 45 used a bicycle in the last seven days.
- Those respondents aged 16 to 29 years old or of pensionable age are more likely to have used the bus in the last seven days than other age groups.

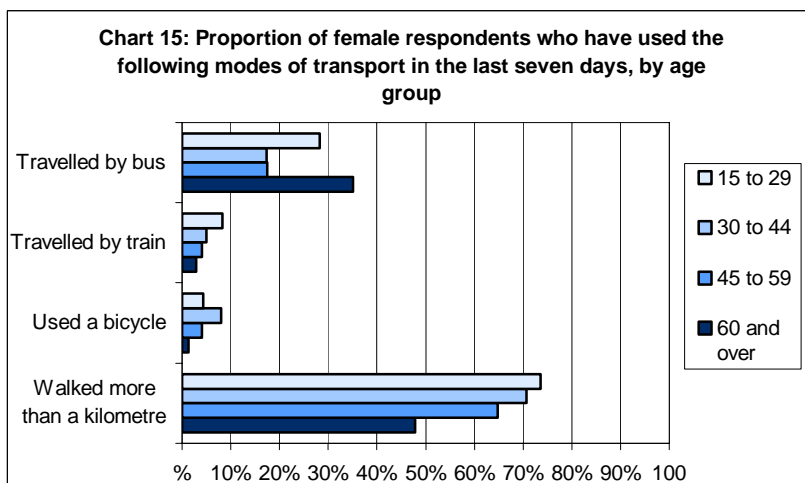
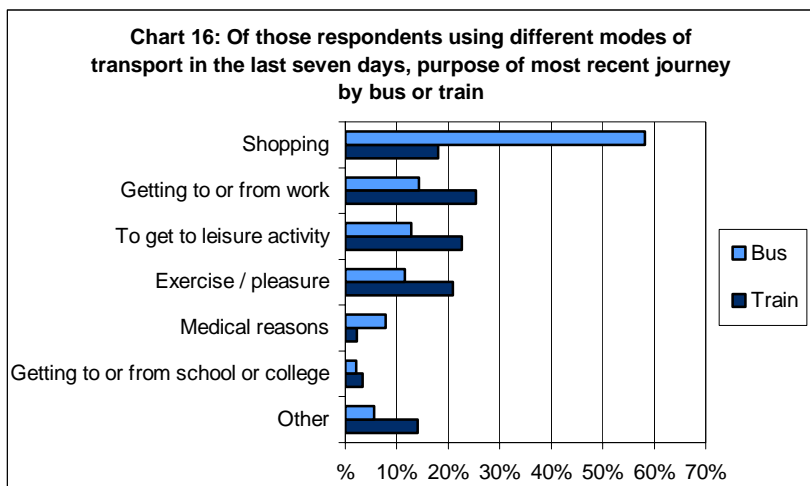


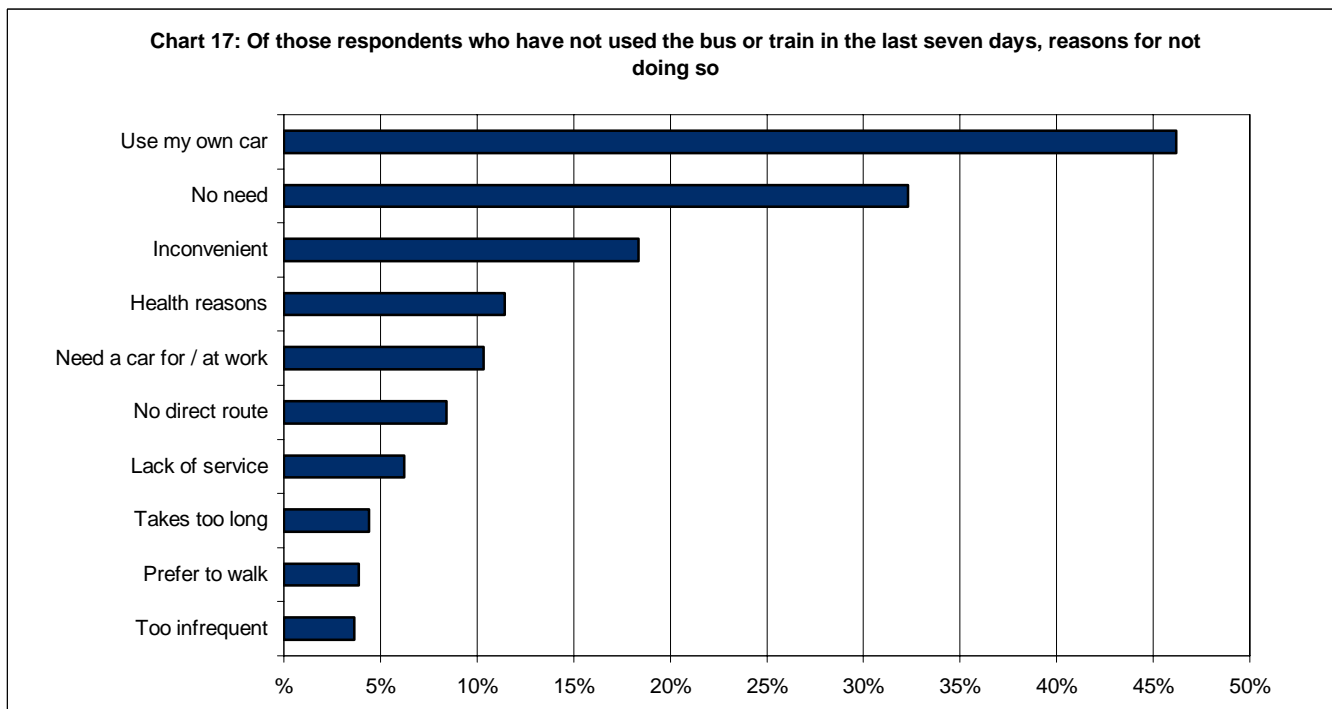
Chart 17 explores the reasons for respondents taking trips by two of these “sustainable” modes of transport, which is by bus or by train.



- This chart shows that 58% of respondents who had used the bus in the last seven days did so to go shopping.
- A higher proportion of respondents used the train rather than the bus to get to or from work or to get to a leisure activity.

- Further information from the survey shows that of those respondents who had used the bus in the last seven days, 77% do so at least once a week. Also, of those respondents who had used the train in the last seven days, 30% do so at least once a week.

The survey also investigated the reason why respondents did not use public transport. The ten most commonly given reasons are set out in Chart 18 below. Respondents were able to provide more than one answer.



- Of those respondents who have not used public transport in the last seven days, 46% stated that the reason they did not is that they used their own car instead.
- 11% stated that they didn't use public transport because of health reasons, though this proportion rose to 26% of pensioners stating that reason.
- 10% of those respondents aged 16 to 24 said that they didn't use public transport in the last seven days because of inconvenience, compared with 21% of adults aged 25 to 59/60.

The Living in Wales survey also looks at the “accessibility” of bus transport. This is defined as the time it takes to walk to a bus stop and the frequency of buses from that bus stop. Table 2 shows the time taken to walk to the nearest bus stop for the respondent, by the type of area.

Table 2: Respondents' walking time to nearest bus stop, by type of area

	Urban >10k	Town and fringe	Village	Hamlet & isolated dwellings	Total
6 minutes or less	82%	79%	72%	45%	78%
7-13 minutes	10%	13%	11%	10%	11%
14 minutes or longer	4%	5%	13%	41%	8%
Don't know	3%	3%	3%	4%	3%
Total	100%	100%	100%	100%	100%

Weighted total: 1,261,000

Source: Living in Wales survey 2007

- Table 2 shows that, overall, 89% of respondents live within a 13 minute walk of their nearest bus stop. This ranges from 93% of those respondents living in urban areas, to 55% of those living in hamlets and isolated dwellings.
- Only three per cent of respondents don't know how long it would take them to walk to their nearest bus stop.

Table 3 looks at the second part of accessibility, the frequency of buses; but only for respondents within 13 minutes walking time to that bus stop. It is assumed that a walking time of 14 minutes or more already reduces the accessibility of bus services.

Table 3: Of those respondents who have a bus stop 13 minutes or less from home, perception of frequency of buses at nearest bus stop, by type of area

	Urban >10k	Town and fringe	Village	Hamlet & isolated dwellings	Total
Less than once an hour	3%	11%	34%	45%	10%
At least once an hour but less than every half hour	15%	27%	32%	20%	19%
At least once every half hour	56%	38%	14%	9%	46%
Don't know	25%	25%	20%	26%	24%
Total	100%	100%	100%	100%	100%

Weighted total: 1,118,000

Source: Living in Wales survey 2007

- Table 3 shows that, of those respondents with a bus stop 13 minutes or less from home, 71% of those in urban areas had a bus service at least once an hour. This is compared with 29% in hamlets and isolated dwellings. Of those respondents who have a bus stop within a 13 minute walk from home, a quarter of them don't know how often a bus is available.

The Living in Wales survey collects information about perception of the quality of bus services in Wales.

- Of those respondents who have used the bus in the last seven days, 86% had a good perception of the punctuality of the service, while 93% thought the “ease of boarding” was very good or fairly good.
- 14% of those respondents felt the information available (e.g. timetables) was poor.

The Living in Wales survey also collects information about the concessionary fares scheme. Table 4 shows the level of take up of this scheme amongst the elderly in Wales in 2007.

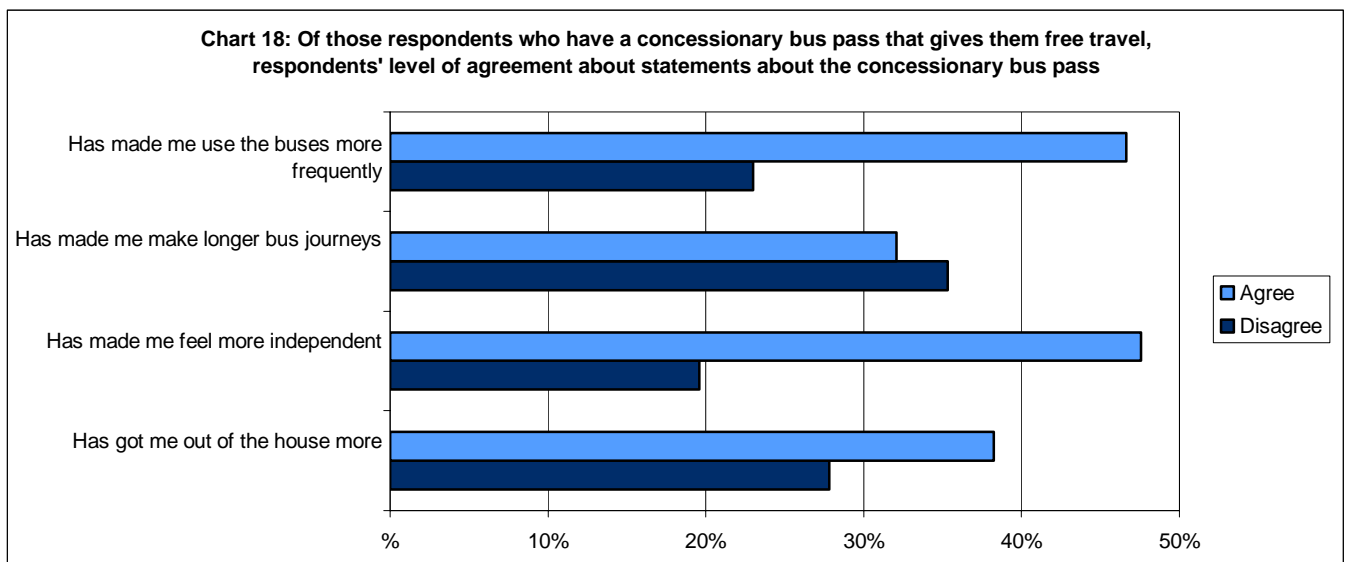
Table 4: Respondents aged 60 and over who have a concessionary bus pass that gives them free travel, by sex

	Male	Female	Total
Yes	70%	78%	74%
No	30%	22%	26%
Total	100%	100%	100%

Weighted total: 473,000 Source: Living in Wales survey 2007

- Overall, 74% of those respondents aged 60 and over have a concessionary bus pass. This varies from 70% of male respondents to 78% of females.

It also collects information about the impact this scheme had had on respondents who have concessionary bus passes. This is summarised in Chart 19 below. The results do not include those with no opinion on the statement or those that stated “Neither agree nor disagree”. “Agree” covers those who stated “strongly agree” and “tend to agree”, and “disagree” covers those who stated “strongly disagree” and “tend to disagree”.



- Of those respondents who have a concessionary bus pass that gives them free travel, 47% agree that it has made them use the buses more frequently.
- 20% of those respondents do not feel it has made them more independent.

Tenure

The Living in Wales survey collects data on the tenure of households.

A selection of the information available from the survey results is shown below:

Table 5 shows how tenure varies by household type.

Table 5: Type of households, by tenure

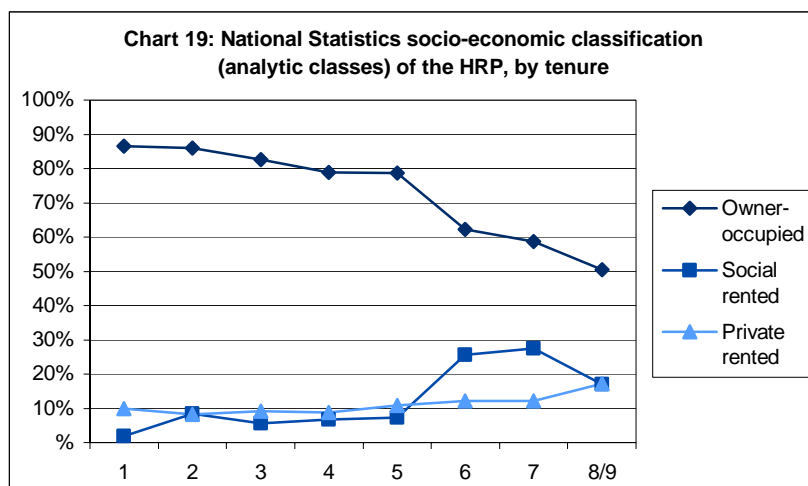
	Owner-occupied	Local authority	Housing Association	Private rented	Total
Single pensioner	71%	17%	5%	6%	100%
Married couple pensioner	90%	5%	2%	3%	100%
Single person, not a pensioner	57%	14%	10%	19%	100%
Single parent household	49%	24%	12%	15%	100%
Two adult household with children	81%	7%	4%	8%	100%
Other	77%	6%	2%	15%	100%
All households	74%	11%	5%	11%	100%

Weighted total: 1,261,000

Source: Living in Wales survey 2007

- Those respondents living in two adult households are more likely to own their house. 90% of married couples of pensionable age own their house.
- Single parents are more likely to be renting from their local authority than any other type of household, with nearly a quarter doing so. Less than half of single parents own their house.
- Those most likely to be renting privately are single persons (not pensioners), with 19% doing so.

Another broad classification variable is investigated on the chart below, which shows how tenure varies by the socio-economic classification of the household reference person (HRP).



- The higher the socio-economic classification of the HRP (i.e. the lower the number), the more likely they are to own the house they live in.
- 87% of those HRPs in higher managerial and professional occupations live in their own house, compared to 59% of those HRPs in routine occupations.
- Looking at those HRPs who don't own their own home, the opposite trend can be seen. Generally, a HRP is more likely to be living in a privately rented household if they are in classes one to five. For HRPs in classes six to nine, they are more likely to rent from the local authority or housing association than privately.

Table 6: NS-SEC analytic classes

1	Higher managerial and professional occupations
2	Lower managerial and professional occupations
3	Intermediate occupations
4	Small employers and own account workers
5	Lower supervisory and technical occupations
6	Semi-routine occupations
7	Routine occupations
8/9	Never worked, long-term unemployed, not otherwise classified

Overcrowding

The Living in Wales survey provides information to assess the extent of overcrowding in households. This is done by a measure called the bedroom standard.

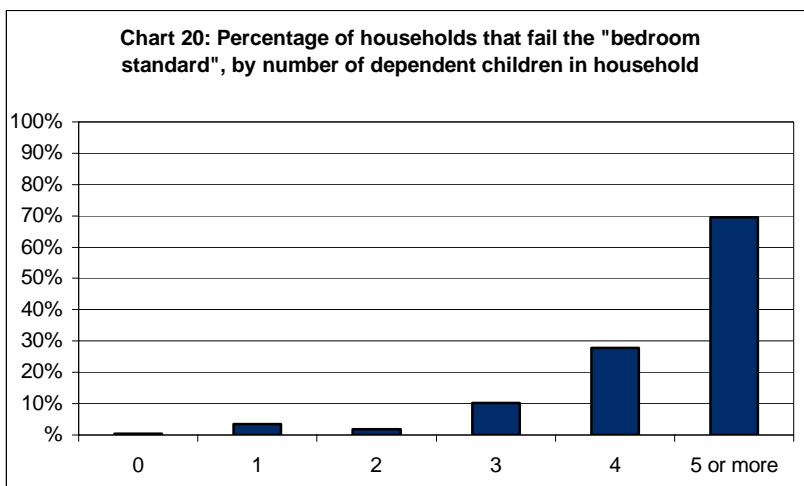
The bedroom standard assumes a separate bedroom for each of the following:

- A cohabiting couple (married or unmarried)
- Any person aged 21 or over
- Each pair of young persons aged 10 to 20 of the same sex
- Each pair of children under 10 (regardless of sex)
- Unpaired young persons aged 10 to 20 are paired with a child under 10 of the same sex

The information in the Living in Wales survey shows:

- Overall two per cent of households in Wales failed the bedroom standard.

There is an association between the number of children in a household and the likelihood that the household is overcrowded. This is explored in Chart 21 below:



- A slightly higher proportion of households with one dependent child have failed the bedroom standard than households with two dependent children.
- 40% of households with four or more dependent children failed the bedroom standard.

Disability & Long-term Limiting Illness

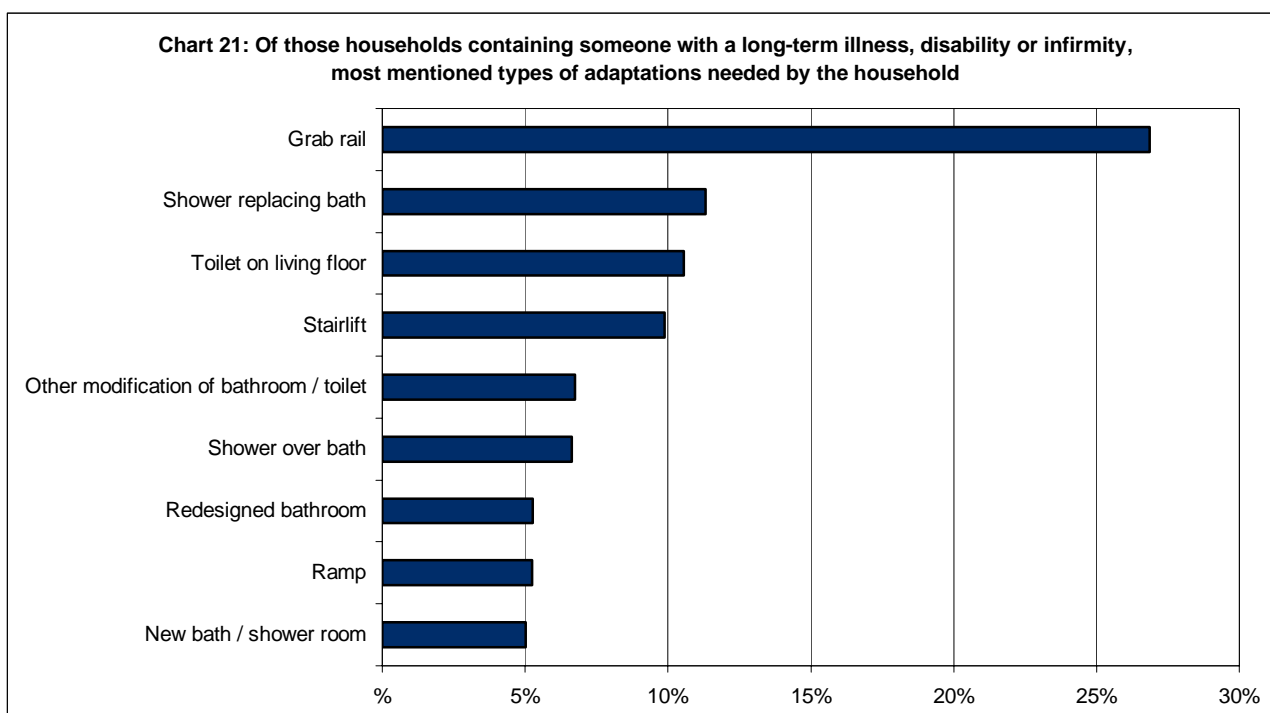
The Living in Wales survey collects data on several different areas to do with long-term illness, disabilities and infirmity, for example nature of disability, providing care and adaptations possessed/needed by households.

A selection of the information available from the survey results is shown below:

The Living in Wales survey collects information about (limiting) long-term illness. That is anything that has troubled the person over a period of time and that is likely to affect them over a period of time. A “limiting” long-term illness or disability limits their activities in some way.

- This shows that, overall, 19% of people in Wales have a long-term illness, disability or infirmity. Of those, 82% have a limiting long-term illness, disability or infirmity, i.e. 16% of people in Wales. These figures are low in relation to other data sources – see “Key Quality Information” for more discussion.

The Living in Wales survey is unique in relating long-term illness of people in the household to physical adaptations of their home. The chart below shows the percentages of households that contain a person with a long-term illness, disability or infirmity that need particular types of adaptations. The chart only shows those adaptations mentioned by at least five per cent of households. Respondents were able to provide more than one answer. 46% of households stated that no adaptations were needed.

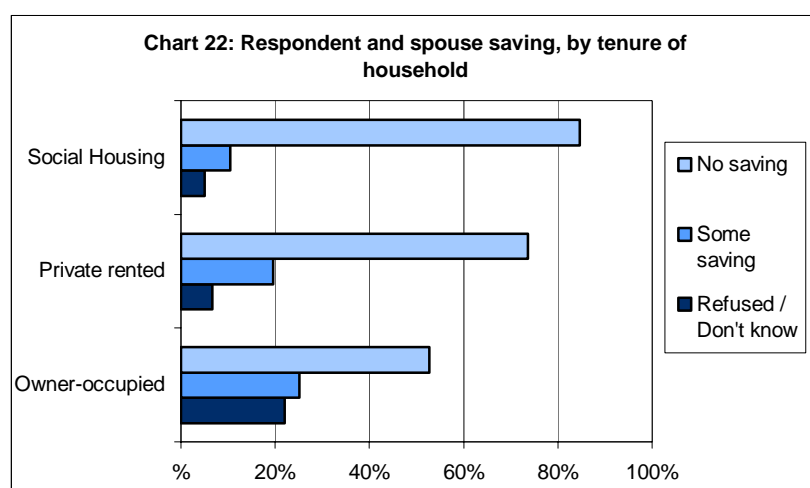


- In those households where someone with a long-term illness, disability or infirmity lived, a grab rail was the most mentioned type of adaptation, with 27% of households stating they needed this item.
- Other common types of adaptations mentioned were relating to the bathroom / toilet / shower.

The Economy of Households

The Living in Wales survey collects data on several different areas to do with the economy of households, for example total gross income, benefits, savings and working/workless households. A selection of the information available from the survey results is shown below:

One important issue for social inclusion and equality is whether or not a family has savings or money invested to provide a cushion for unexpected expenditure or loss of income. Chart 23 below shows whether respondents and their spouses had any savings. 18% of respondents refused to answer or stated that they did not know whether they had any savings.



- Those respondents who own their own home are more likely to have some savings, with 25% having some savings, compared with only 14% of respondents who do not own their own homes.
- A much higher proportion of those respondents who own their homes refused to answer the question (16%) compared with around 4% of respondents from other tenures.

The Living in Wales survey can also be used to look at the working status of the household as a whole. Overall, 14% of households in Wales are workless households.

Tables 7a and 7b show this status by tenure group.

Table 7a: Proportion of households that are working or workless, by tenure

	Owner-occupied	Local authority	Housing Association	Private rented	Total
Working households	81%	5%	3%	11%	100%
Households containing both working and workless members	76%	9%	4%	11%	100%
Workless households	40%	28%	13%	19%	100%
Non-working age households	79%	12%	4%	5%	100%
Working age households of unknown work status	52%	18%	10%	20%	100%
Total	74%	11%	5%	11%	100%

Weighted total: 1,261,000

Source: Living in Wales survey 2007

Table 7b: Proportion of households of different tenures, by whether they are working or workless households

	Owner-occupied	Local authority	Housing Association	Private rented	Total
Working households	46%	20%	26%	44%	42%
Households containing both working and workless members	16%	12%	12%	16%	15%
Workless households	8%	36%	38%	25%	14%
Non-working age households	30%	31%	22%	13%	28%
Working age households of unknown work status	1%	2%	2%	2%	1%
Total	100%	100%	100%	100%	100%

Weighted total: 1,261,000

Source: Living in Wales survey 2007

- Households where at least one member of working age is working are more likely to own their home than other types of household. Non-working age households also have a similar proportion (around four in every five) owning their own home.
- Workless households are less likely to live in owner-occupied households than other tenures. Only 40% of workless households owned their own homes, compared with 81% of working households.

Table 8: Proportion of dependent children in households that are working or workless (working age only), by type of household

	Working households	Households containing both working and workless members	Workless households	Total
1 parent household - dependent children	50%	0%	50%	100%
2 adults, 1 or 2 dependent children	70%	24%	5%	100%
2 adults, 3 or more dependent children	54%	35%	11%	100%
Other 1 parent household - (single adult, at least 1 dependent and 1 non-dependent child)	41%	37%	22%	100%
Other 2 adult household - (2 adults, at least 1 dependent and 1 non-dependent child)	40%	53%	7%	100%
Other	39%	57%	4%	100%
Total	58%	26%	16%	100%

Weighted total: 680,000

Source: Living in Wales survey 2007

- Nearly half of all dependent children living in “one parent households with dependent children” are living in workless households.

Older People's Housing

The Living in Wales survey collects data on several different aspects of older people's housing, for example the means of home purchase, information about renting and about disabilities and illnesses. Below is a selection of the information available from the survey results, which compares the results for households where the HRP is above versus below pensionable age (65 for men, 60 for women).

Table 9 below looks at how owner-occupiers acquired their current home.

Table 9: Of those households who own their own home, means of home purchase, by age of household reference person (below or of pensionable age)

	HRP below pensionable age	HRP of pensionable age	Total
Bought with mortgage / loan(s), with or without a cash payment	86%	54%	75%
Bought with cash payment / paid outright	10%	38%	20%
Inherited it	4%	7%	5%
Other	2%	2%	2%
Weighted total: 933,000			Source: Living in Wales survey 2007

(a) These percentages do not necessarily add to 100 per cent as respondents were able to provide more than one answer.

- A greater proportion of HRPs of pensionable age bought their own home outright. Of those HRPs below pensionable age, 86% had to take out a mortgage or loan in order to buy their home.
- Two per cent of those HRPs who own their own home obtained it by other means, e.g. in a divorce settlement or as a gift.

Table 10 looks at households renting their home, and looks at the distribution amongst different types of landlord.

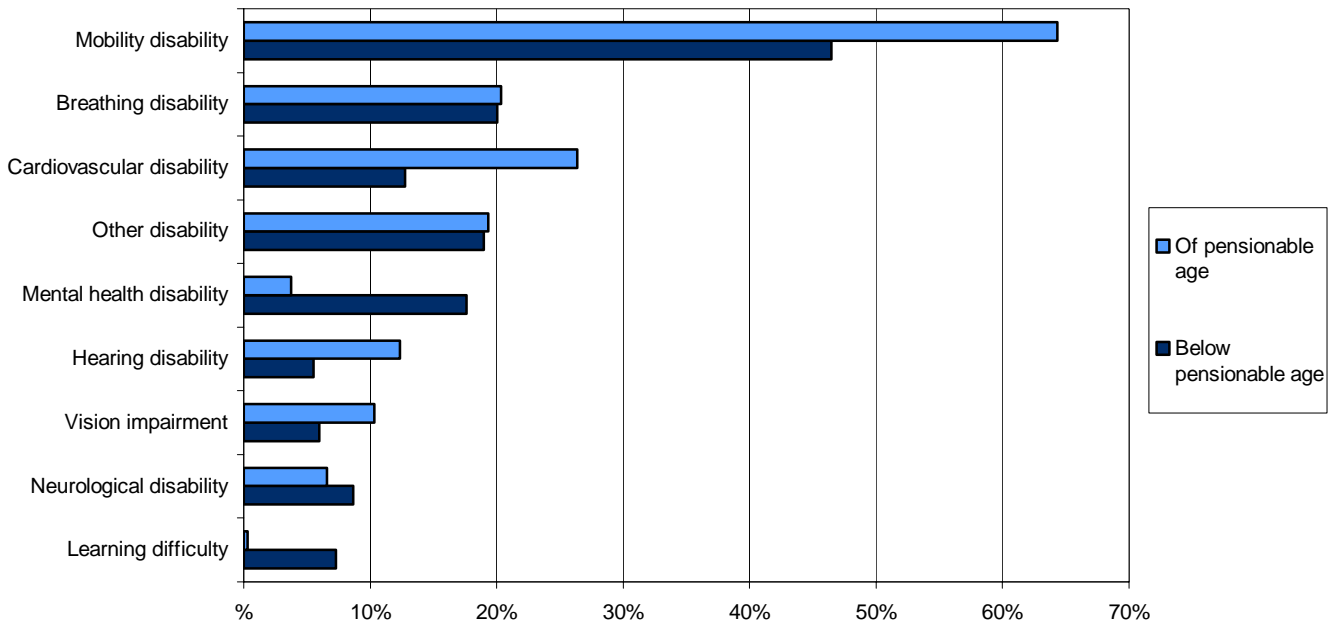
Table 10: Of those households renting their home, type of landlord, by the age of household reference person (below or of pensionable age)

	HRP below pensionable age	HRP of pensionable age	Total
Local authority or council	35%	58%	41%
Housing association, co-operative or charitable trust	19%	18%	18%
Relative of someone in this household	2%	9%	4%
Other individual private landlord	44%	15%	37%
Total	100%	100%	100%
Weighted total: 334,000			Source: Living in Wales survey 2007

- Of those households renting their home, the proportion of HRPs of pensionable age renting from their local authority or council was 58%, compared with 35% of those HRPs below pensionable age.
- The proportion of HRPs below pensionable age renting from a private landlord, other than a relative of someone in the household was 44%, compared to 15% of those of pensionable age.

Lastly, this section uses the survey to look at how the nature of disability varies for people with long-term illness between those above and those below pensionable age. Chart 24 below sets out the various types of disability; respondents were able to provide more than one answer.

Chart 23: Of those people who have a long-term illness, disability or infirmity, nature of the disability, by age



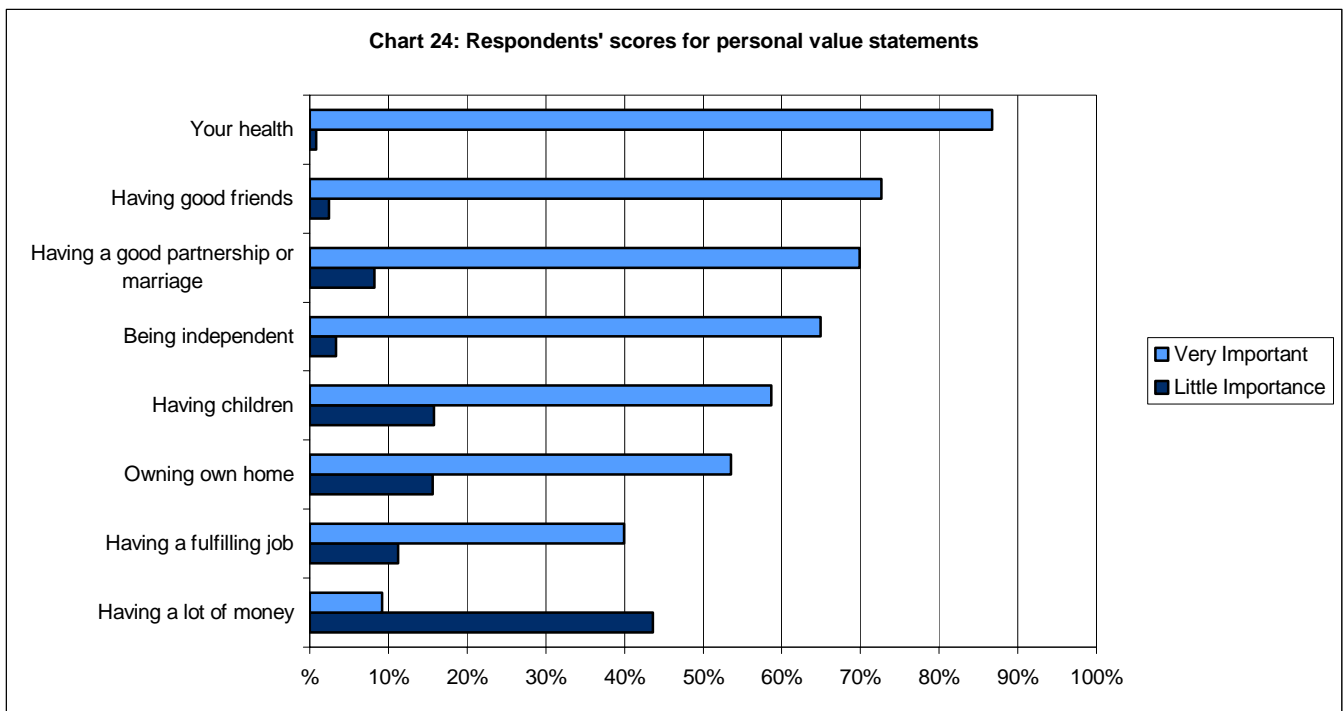
- Of those who have a long-term illness, disability or infirmity, people of pensionable age are more likely to have a mobility, hearing or vision disability. They are also more likely to suffer from a cardiovascular disability.
- People below pensionable age are more likely to suffer from a mental health disability or learning difficulties.
- Of those people who have a long-term disability, those below and of pensionable age are just as likely to suffer from a breathing disability.

Values and Opinions

The Living in Wales survey collects data on respondents' values and opinions on several different areas, for example importance of health/ money/ friends, likes and dislikes of neighbourhood and thoughts on local facilities/ services.

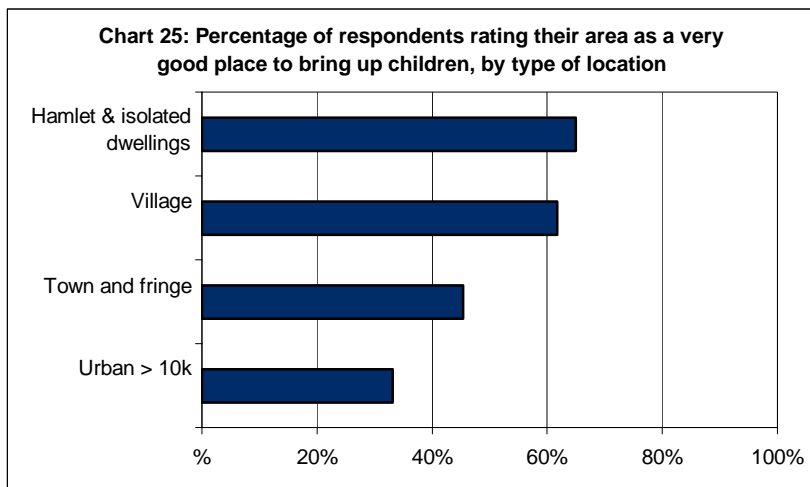
A selection of the information available from the survey results is shown below:

Chart 25 below shows what issues are important in respondents' lives. Respondents were asked to give a score from 1 to 10 (10 being the most important) for the statements noted below. For the purpose of this chart, a score of 10 is shown as "Very Important", and a score of 1-5 is shown as of "Little Importance".



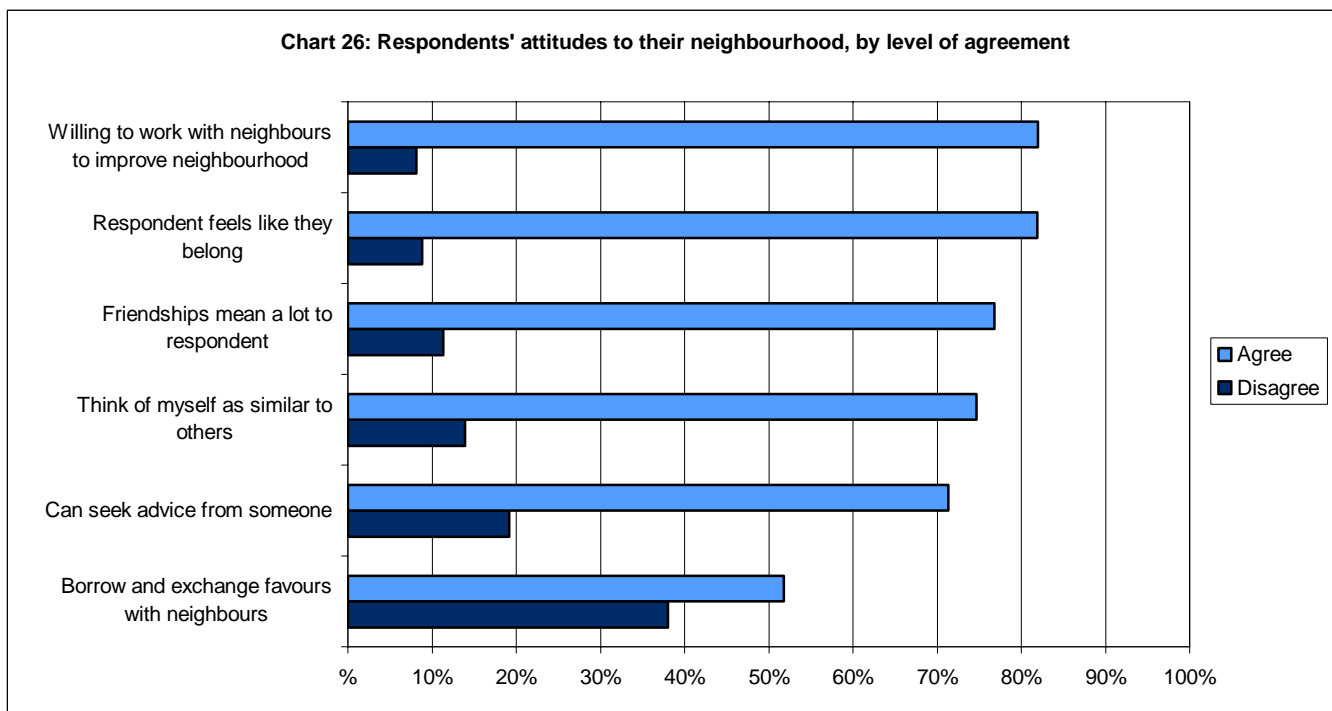
- Only one per cent of respondents valued their health as of little importance, with 87% giving it a score of 10.
- Having good friends and a good partnership or marriage were also thought of as being very important to respondents.
- 16% of respondents thought that owning their own home was of little importance, while 44% of respondents felt that having a lot of money was of little importance.

The survey also asked a range of questions about respondents' views of their neighbourhood, or local area. Firstly, Chart 26 shows how they rate their area as a place to bring up children.



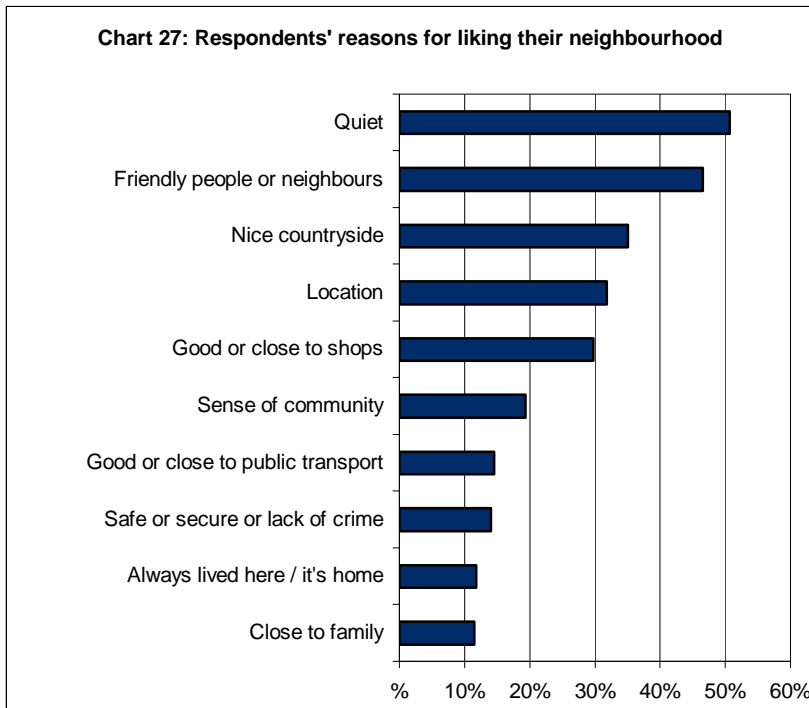
- 65% of respondents that lived in hamlets and isolated dwellings stated that they thought their area was a very good place to bring up children. The corresponding proportion for those living in urban areas was 33%.

The survey also asks a set of more direct questions about the local neighbourhood. Chart 27 illustrates these views for respondents as a whole. The results do not include those with no opinion on the statement or those that stated "Neither agree nor disagree". For this chart "Agree" covers those who stated "strongly agree" and "tend to agree", and "disagree" covers those who stated "strongly disagree" and "tend to disagree".

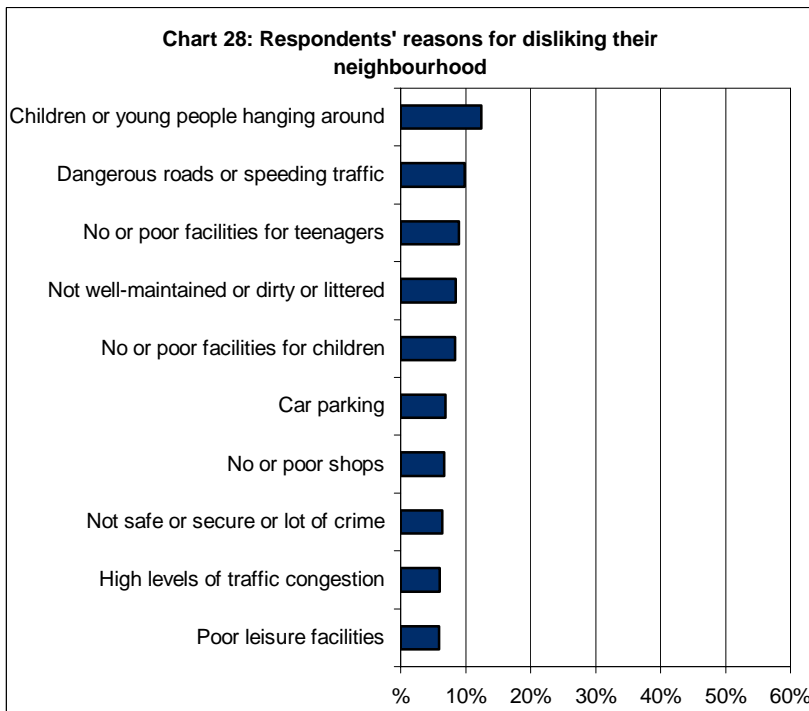


- 82% of respondents feel that they belong in their neighbourhood.
- 52% of respondents borrow and exchange favours with their neighbours.
- 8% of respondents stated that they were not willing to work with neighbours to improve their neighbourhood.

Lastly the survey asks for reasons why respondents like, or dislike, their neighbourhood. Respondents were able to provide more than one reason for liking/disliking their neighbourhood and the ten most commonly selected reasons are shown in Charts 28 and 29 below.



- 47% of respondents stated friendly people or neighbours as a reason for liking their neighbourhood and 19% said they liked the sense of community.
- Children or young people hanging around was the most common reason given for disliking their neighbourhood, and one in every ten respondents said that dangerous roads or speeding traffic was a problem.
- 38% of respondents stated that they did not dislike anything about their neighbourhood, while three per cent stated that they did not like anything about their neighbourhood.

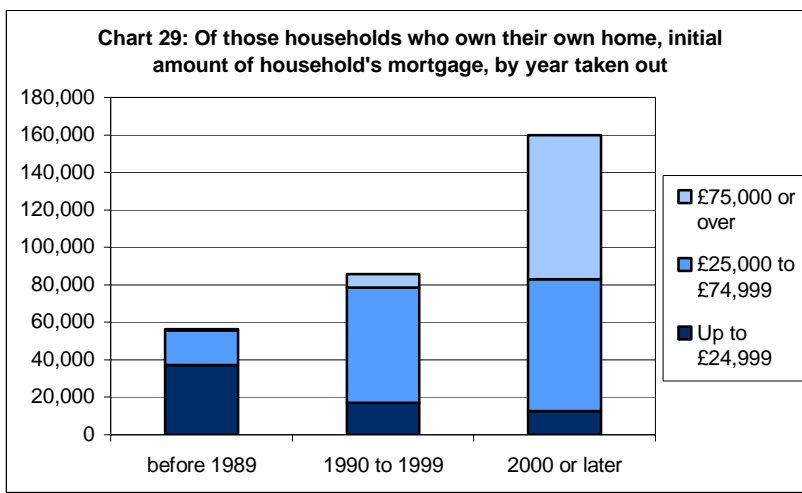


Housing Finance

The Living in Wales survey collects data on several different areas to do with housing finance, for example council tax benefit, council tax bands, mortgages and renting.

A selection of the information available from the survey results is shown below:

One interesting area concerns owner-occupiers with mortgages, more specifically when they took out their mortgage and the amount of that mortgage. Chart 30 below shows the initial amount of households' mortgages, for those who own their own home.



- There were a larger number of mortgages, current in 2007, that were taken out during the most recent period since 2000, than were taken out earlier.
- The proportion of households requiring a mortgage of £75,000 or more has increased over the years. This follows the trend seen in the housing market, where house prices have also increased.

- The number of mortgages taken out in the “£25,000 to £74,999” and the “up to £24,999” groups is similar for mortgages taken out in 2000 or later, and for mortgages taken out between 1990 and 1999.

In contrast, the survey can be used to look at the average rent levels faced by households that rent their home.

Table 11: Of those householders that rent their own home, average monthly rent of households, by type of landlord (£s)

Local authority or council	258
Housing association, co-operative or charitable trust	271
Private landlord	428
Overall	332
Weighted total: 333,000	

Source: Living in Wales survey 2007

- The average monthly rent of households in Wales is £332.
- For those renting from their local authority or housing association the average rent is around £260 a month.
- For those renting privately the average rent is around £430 a month.

Key Quality Information about the Living in Wales Survey

The Living in Wales survey is a household survey, with only one person from each household interviewed, usually (but not always) either the Household Reference Person (HRP)¹ or their spouse/partner. Most questions in the survey either reflect the experience of the person interviewed or the position of the household as a whole. So these questions do not reflect the experiences of all the adults in that household. The responses to the questions “to respondents” may be influenced, therefore, by the characteristics of respondents, in as much as these differ from those of all adults².

The table below shows the differences in the proportions of respondents in the survey to the proportions of the actual population of Wales. The figures come from the 2005 and 2006 survey/mid-year estimates since 2007 mid-year estimates are not available at the moment.

Percentage split of respondents' ages, compared to actual population

Age Group	Proportion of total respondents/population	
	LiW	Actual Adult Population ¹
16-19	0.7%	3.2%
20-24	4.4%	8.4%
25-29	5.6%	6.9%
30-34	7.7%	7.5%
35-39	8.9%	8.9%
40-44	9.7%	9.4%
45-49	8.9%	8.5%
50-54	8.5%	8.1%
55-59	10.2%	9.0%
60-64	8.6%	7.5%
65-69	7.5%	6.3%
70-74	6.2%	5.4%
75-79	6.1%	4.5%
80-84	4.1%	3.5%
85-89	2.1%	1.9%
90+	0.7%	0.9%
Total	100%	100%

Weighted LiW total: 2,495,000

Sources: Living in Wales 2005 and 2006
Statswales

¹ Calculated by taking All-Wales totals of 2005 and 2006 Mid-year Estimates

¹ See 'Terms and Definitions on page 30.

Comparison with other data sources on disability and (Limiting) long-term illness

Questions on (limiting) long-term illness (LLTI) are commonly included in surveys. It is, however, not a simple well-defined concept, and as it is based on people's own views of their situation can be significantly affected by the collection method, wording of the question and context.

The figures for LLTI in the LiW Survey are relatively low compared with other sources. For example the 2001 Census suggests that 23 per cent of people in Wales have LLTI, 27 per cent of adults and 5 per cent of children. The Welsh Health Survey 2004 shows LLTI rates of 28 per cent of adults and 5 per cent of children; and the General Household Survey 2003 suggests that 22 per cent of people in Wales have LLTI.

The reason for the lower figure from the LiW survey may include the context of the question (that is that it is not part of wider health questionnaire). When comparing the LiW survey with the 2001 Census, the former, like other household surveys, excludes the non-household population, who have higher rates of long-term illness. It also might be significant that for the LiW Survey the respondents were reporting on the illness-status of other members of the household.

This all means that the 2001 Census or the Welsh Health Survey are the preferred sources of overall estimates of the prevalence of LLTI in Wales. The LiW survey is best used, however, for cross-classifying LLTI with housing related variables, and with benefit receipt and so on.

Further information about the Living in Wales survey

The Living in Wales survey is a continuous household survey for Wales commissioned by the Welsh Assembly Government. The Local Government Data Unit ~ Wales manages the survey on their behalf.

Addresses were randomly chosen across Wales from the Postcode Address File (PAF). The sample was structured to provide a minimum of 300 successful interviews in each local authority in each year.

The weighted total shown for the tables in this Release is the sum of the weighted number of respondents for each particular question (the responses have been weighted to make them representative of households in Wales) of the 2007 Living in Wales survey. As a brief overview of this report's findings, below is a table depicting the work status and gender of the survey's respondents:

Percentage split of respondents' work status

Status	Male	Female	Total
Full-time	46.0%	29.3%	36.1%
Part-time	3.9%	18.0%	12.3%
Government Training Scheme	0.1%	0.1%	0.1%
Long-term sick or disabled	8.0%	4.7%	6.0%
Registered unemployed	3.1%	1.4%	2.0%
Not registered unemployed, but seeking work	0.9%	0.8%	0.8%
At home or not seeking work	1.0%	12.8%	8.0%
Fully retired (including retired early)	35.2%	31.0%	32.7%
Full-time student	1.7%	1.6%	1.7%
Other	0.0%	0.2%	0.1%
Refused	0.1%	0.0%	0.1%
Don't know	0.0%	0.0%	0.0%
Total	100.0%	100.0%	100.0%

Weighted total: 1,261,000

Source: Living in Wales 2007

Also:

- All weighted totals are rounded to the nearest thousand;
- Unless stated otherwise, percentages may not sum to 100% because of rounding; and
- Weighted totals are given for each table. If percentages multiplied by weighted totals are less than 5,000, figures may be statistically unreliable.

Other Information

1. The sample was structured to deliver at least 300 successful interviews within each local authority per year, 1,000 over 3 years, and around 7,500 successful interviews overall for Wales per year.
2. Stratified sampling was used for the Living in Wales Survey, as purely random sampling from all addresses in Wales would not provide sufficient addresses over a three-year period in the smaller local authority areas to allow analysis of the survey's data. As the local authority analysis was one of the requirements for the survey, the Data Unit agreed stratified sampling by local authority and set a target of 1,000 successful interviews per local authority across 3 years.
3. All tables produced from the 2007 Living in Wales Survey are at Wales level only. Some analysis by Economic fora areas will be possible once the 2004 and 2005 combined data file becomes available – but only where the same questions were asked in both years. Local authority level analysis will be available once a combined data file for 2004, 2005 and 2006 is produced, however analysis will only be possible where questions have appeared in the survey for the 3 consecutive years.
4. To account for all types of non-response, over 12,500 addresses were selected randomly from PAF (Postcode Address File) to make up the target sample. This number was derived using the 2004, 2005 and 2006 Living in Wales Survey non-response rates.
5. Non-response was monitored to see whether the survey was missing certain property types and the reasons for non-response. Significant variation was seen in non-response rates depending on tenure and local authority. Therefore weighting was added in the grossing stage and was calculated separately for each local authority.
6. The grossing factors for the survey data were calculated by GfK NOP under direction from Ipsos MORI. The calculation of the household grossing weights was a two stage process. Stage 1 involved estimating the number of eligible addresses and Stage 2 calculated the grossing weights, taking into account: probability of selection of addresses; probability of selection of households within addresses; and response rate. It should be noted that addresses visited for the 2004, 2005 and 2006 surveys were not revisited for the 2007 survey.
7. For the public services questions an additional person-level grossing factor was calculated. This was necessary to correct for differences between the demographic profile of respondents and the profile of Welsh adults as a whole, taking into account area, age, sex and economic status.

Terms and definitions

CAPI – Computer Assisted Personal Interview is the mode used to carry out the interviews. The computer software has built-in checks to ensure greater data accuracy and appropriate question completion.

Household – is defined as one person living alone, or a group of people (not necessarily related) living at the same address with common housekeeping – that is, sharing either a living room or sitting room or at least one meal a day.

HRP – Household Reference Person is defined as the person in whose name the home is owned or rented. If it is jointly owned or rented the HRP is the person who earns the most. If there are equal incomes the HRP is the eldest.

PAF – The Postcode Address File is the most up-to-date and complete address database in the UK. PAF is used for creating the random sample for the survey and helps to reduce the number of ineligible addresses interviewers visit.

Adult – Any person who is not a dependent child. **Dependent Children** – Persons aged between 0 and 15, and persons between 16 and 18 who are single, in full time education and economically inactive.

Working age household - a household containing at least one male aged 16-64 or a female aged 16-59 years old.

Working household - is a 'working age household' where all members aged 16 or over are in employment or aged 16-18 and in full time education.

Workless household - a 'working age household' where no members aged 16 or over are in employment.