

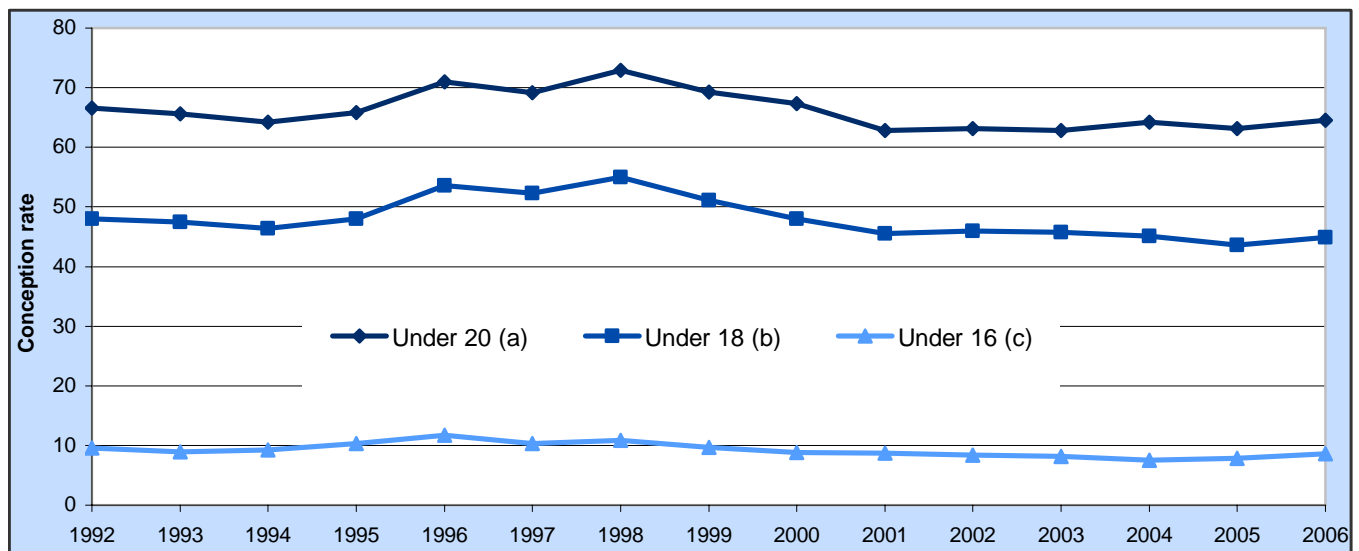
Teenage Conceptions in Wales, 2006

This Statistical Bulletin presents the latest data available on teenage conceptions in Wales in 2006, based on figures produced by the Office for National Statistics. Some data for earlier years and some comparisons with England are also included. The figures are estimates derived by combining information on births and legal abortions. They do not include miscarriages or illegal abortions.

Key results:

- Conception rates for girls aged under 16 decreased every year between 1999 and 2004 but increased to 8.6 per thousand girls aged 13-15 in 2006.
- Conception rates for girls aged under 18 increased from 43.6 per thousand girls aged 15-17 in 2005 to 44.9 in 2006.
- The conception rate for females aged under 20 increased from 63.1 per thousand females aged 15-19 in 2005 to 64.5 in 2006.
- In 2006 the percentage of conceptions in Wales terminated by abortion was 53 per cent for the under 16s, 43 per cent for the under 18s and 36 per cent for the under 20s. The percentage for women of all ages was 20 per cent.

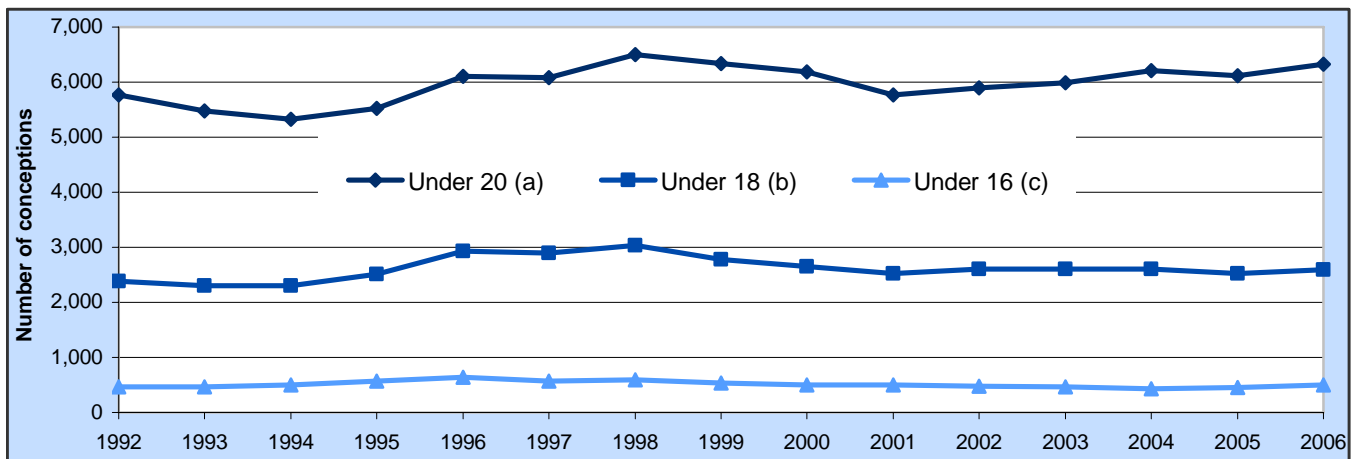
Chart 1 Teenage conception rates by age group, Wales, 1992-2006



(a) Rate per 1,000 female residents aged 15-19
 (b) Rate per 1,000 female residents aged 15-17
 (c) Rate per 1,000 female residents aged 13-15

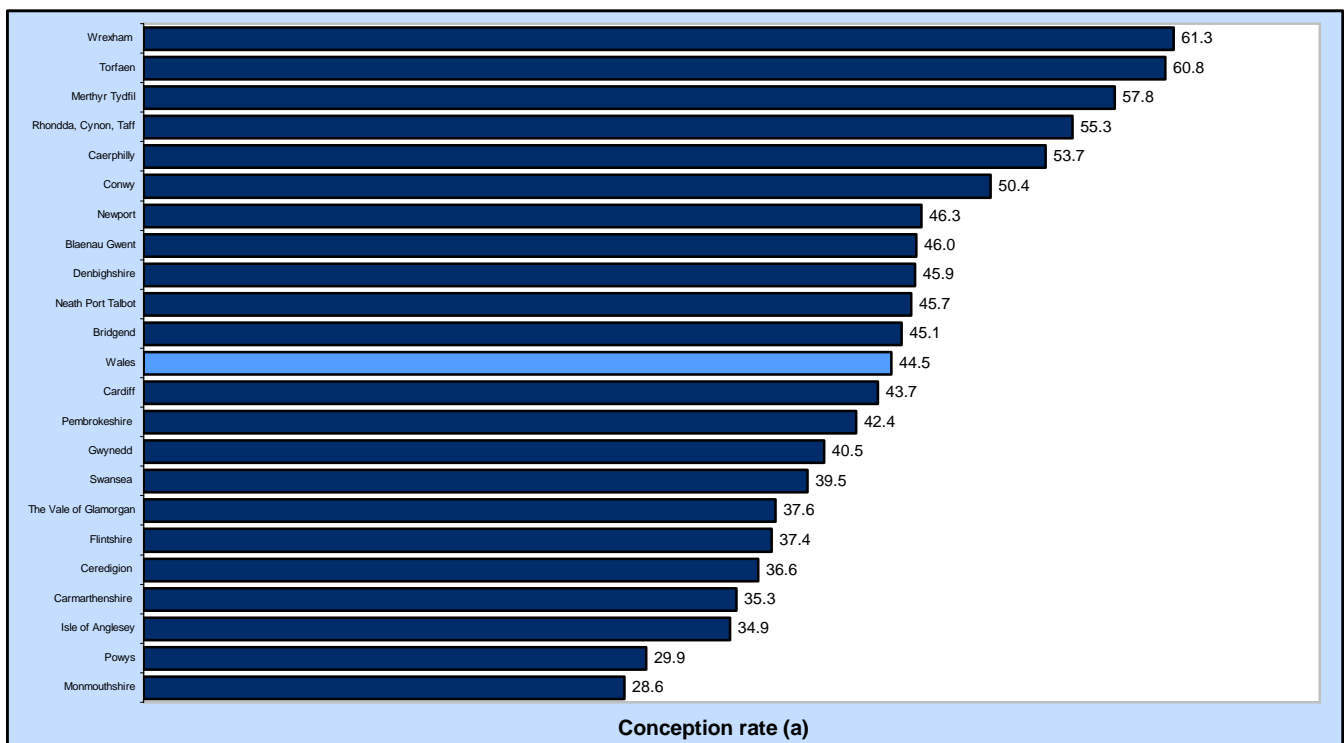
Contact: Tel: 029 2080 1257 E-mail: stats.healthinfo@wales.gsi.gov.uk **Next Update:** October 2009 (provisional)

Chart 2 The number of teenage conceptions by age group, Wales, 1992-2006



- It is estimated that there were around 42,300 conceptions to women in Wales in 2006, up from around 40,900 in 2005 (3.3 per cent).
- An estimated 496 conceptions in 2006 were to girls aged under 16, up from 457 in 2005 (8.5 per cent). Conception rates for girls aged under 16 decreased every year between 1999 and 2004 but increased to 8.6 per thousand girls aged 13-15 in 2006.
- In 2006 there were an estimated 2,598 conceptions to girls aged under 18, up from 2,521 in 2005 (3.1 per cent). Conception rates for girls aged under 18 increased from 43.6 per thousand girls aged 15-17 in 2005 to 44.9 in 2006.
- In 2006 there were an estimated 6,320 conceptions to females aged under 20, up from 6,111 in 2005 (3.4 per cent). The conception rate for females aged under 20 increased from 63.1 per thousand females aged 15-19 in 2005 to 64.5 in 2006.

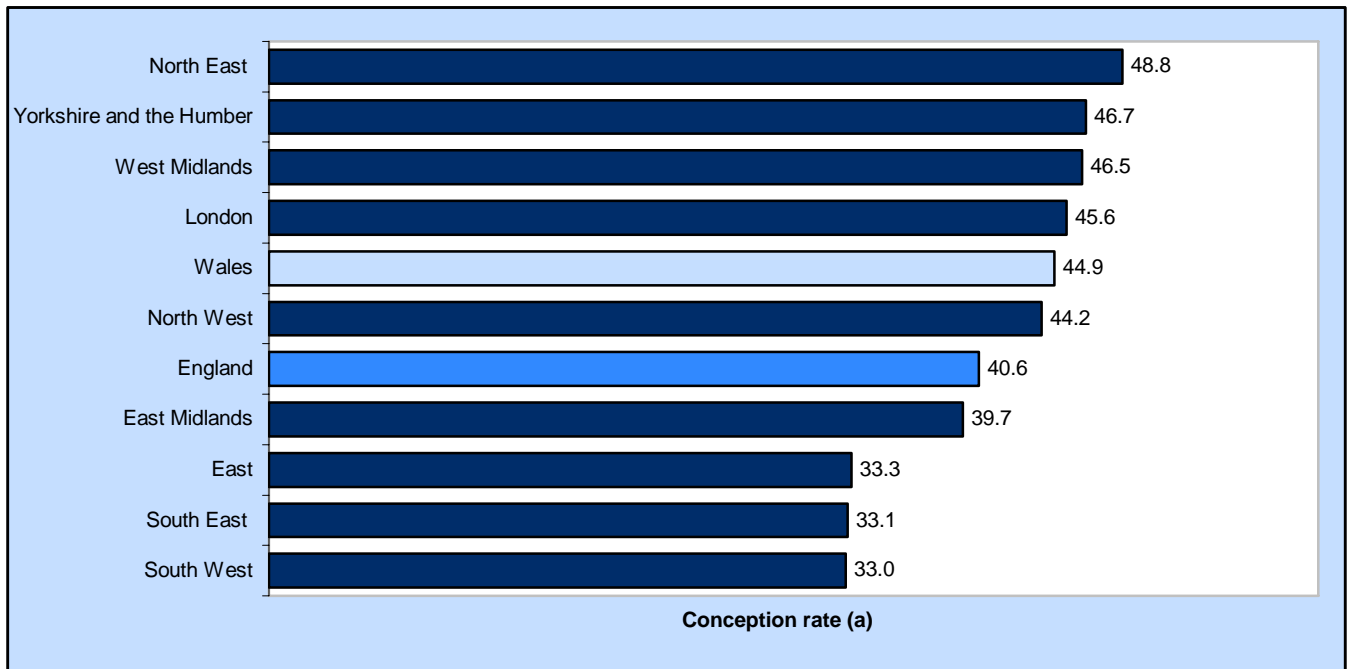
Chart 3 Conception rates for under 18s by unitary authority, Wales, 2004-2006 average



(a) Rate per 1,000 female residents aged 15-17.

- Average conception rates for under 18s in the period 2004-2006 ranged from 28.6 per thousand girls aged 15-17 in Monmouthshire to 61.3 in Wrexham. The average for Wales as a whole in 2004-2006 was 44.5 per thousand girls aged 15-17.

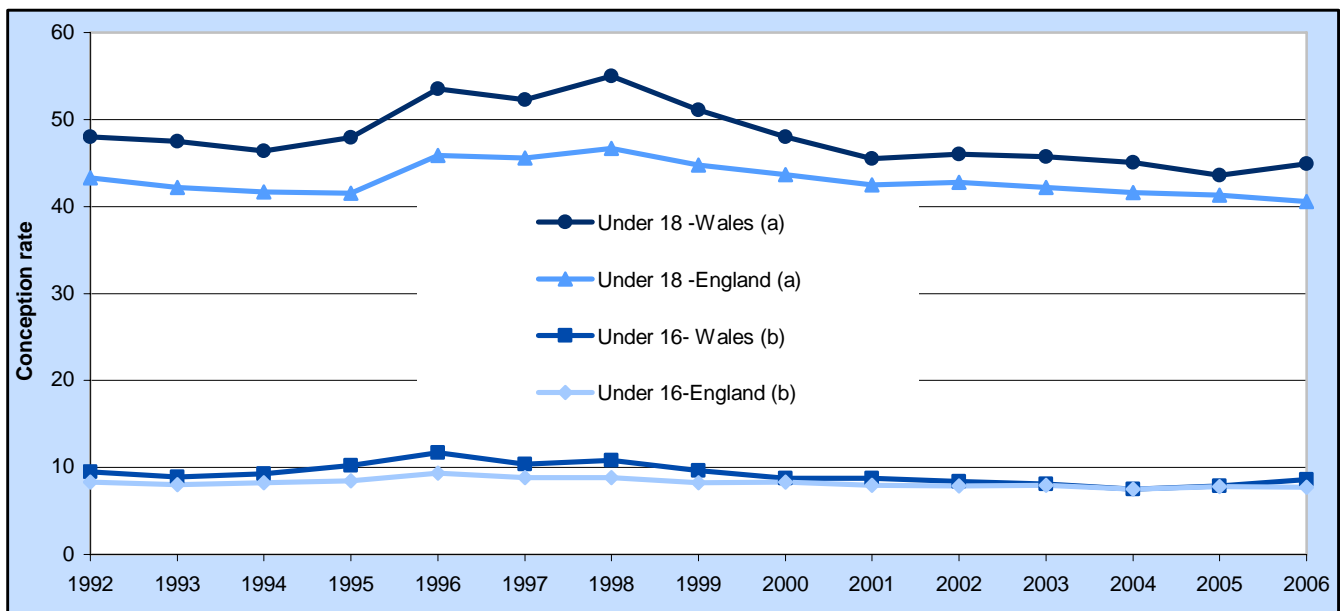
Chart 4 Conception rates for under 18s by region, England and Wales, 2006



(a) Rate per 1,000 female residents aged 15-17.

- In 2006 conception rates for under 18s ranged from 33.0 per thousand girls aged 15-17 in the South West of England to 48.8 in the North East of England.
- In 2006 conception rates for under 18s in the North East, Yorkshire and the Humber, West Midlands and London were higher than those in Wales.

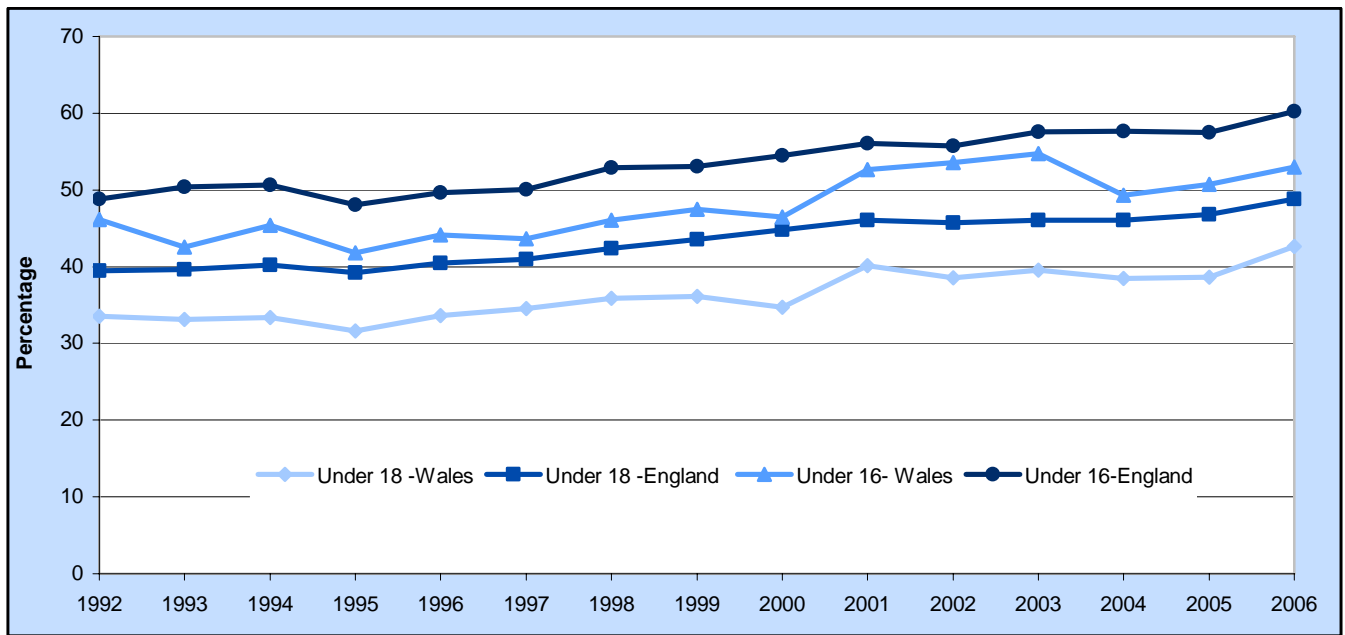
Chart 5 Under 16 and under 18 conception rates, England and Wales, 1992-2006



(a) Rate per 1,000 female residents aged 15-17.
 (b) Rate per 1,000 female residents aged 13-15.

- Conception rates for under 18s are higher in Wales than in England. In 2006 the rates were 44.9 per thousand girls aged 15-17 in Wales and 40.6 in England.
- Conception rates for under 16s have been higher in Wales than in England for most of the years shown although the gap has narrowed in recent years. In 2006 the rates increased to 8.6 per thousand girls aged 13-15 in Wales and decreased slightly to 7.7 in England.

Chart 6 Percentage of under 16 and under 18 conceptions terminated by abortion, England and Wales, 1992-2006



- In 2006 the percentage of conceptions in Wales terminated by abortion was 53 per cent for the under 16s, 43 per cent for the under 18s and 36 per cent for the under 20s. The percentage for women of all ages was 20 per cent.
- In 2006 the percentage of conceptions in Wales terminated by abortion for under 16s was higher than the percentage for the previous year, but lower than in the period 2002-2003.
- In 2006 the percentage of conceptions in Wales terminated by abortion for under 18s was the highest percentage in any of the years shown.
- The percentage of conceptions terminated by abortion is lower in Wales than in England for all the age groups shown.

Key Quality Information:

Conception figures in this bulletin are estimates derived by combining information from birth registrations and notifications of legal abortions. They do not include miscarriages or illegal abortions. The date of conception is estimated using recorded gestation for abortions and stillbirths, and by assuming 38 weeks for live births.

The conceptions figures relate to residents in an area.

Further information:

Further information for Wales can be found on 'StatsWales' on the Welsh Assembly Government website at:

www.wales.gov.uk/statistics.

Further information on conceptions in England and Wales can be found on the Office for National Statistics website at:

<http://www.statistics.gov.uk/CCI/nscl.asp?ID=7454>

Table 1 Conceptions by age group, Wales, 1992-2006

Year	Number				Rate			
	Under 16	Under 18	Under 20	All ages	Under 16 (a)	Under 18 (b)	Under 20 (c)	All ages (d)
1992	470	2,387	5,766	43,175	9.5	48.0	66.5	73.9
1993	465	2,307	5,477	42,244	8.9	47.5	65.6	73.1
1994	505	2,297	5,331	41,214	9.3	46.4	64.2	71.7
1995	567	2,509	5,528	40,319	10.3	48.0	65.8	70.5
1996	644	2,932	6,104	42,375	11.7	53.5	71.0	74.1
1997	564	2,895	6,086	40,855	10.4	52.2	69.2	71.7
1998	597	3,030	6,502	39,970	10.8	55.0	72.9	70.3
1999	537	2,781	6,340	38,460	9.6	51.1	69.3	67.6
2000	495	2,649	6,184	37,892	8.8	48.0	67.4	66.1
2001	496	2,529	5,770	37,413	8.7	45.5	62.8	65.2
2002	480	2,601	5,898	38,445	8.4	46.0	63.2	66.9
2003	466	2,609	5,985	39,003	8.1	45.7	62.8	67.8
2004	434	2,605	6,207	40,301	7.5	45.1	64.2	69.8
2005	457	2,521	6,111	40,930	7.9	43.6	63.1	71.0
2006	496	2,598	6,320	42,287	8.6	44.9	64.5	73.1

(a) Rate per 1,000 female residents aged 13-15

(b) Rate per 1,000 female residents aged 15-17

(c) Rate per 1,000 female residents aged 15-19

(d) Rate per 1,000 female residents aged 15-44

Table 2 Conceptions and conception rates for under 18s by unitary authority, Wales, 2004-2006

Unitary Authority	Number				Rates (a)			
	2003	2004	2005	2006	2003	2004	2005	2006
Isle of Anglesey	44	43	41	55	34.0	32.5	31.1	40.9
Gwynedd	70	79	85	91	34.7	38.0	40.4	43.1
Conwy	104	99	100	110	53.5	49.4	49.4	52.5
Denbighshire	79	92	82	80	42.9	50.5	44.6	42.6
Flintshire	101	107	115	100	35.6	37.5	40.5	34.2
Wrexham	128	146	152	145	56.0	62.3	62.6	58.9
Powys	74	75	67	79	31.0	30.9	26.9	31.8
Ceredigion	31	51	41	44	24.2	41.0	33.4	35.5
Pembrokeshire	84	96	90	113	38.4	42.1	38.2	46.6
Carmarthenshire	127	128	122	112	36.5	36.8	35.6	33.5
Swansea	157	173	160	159	37.3	41.3	38.5	38.7
Neath Port Talbot	152	118	125	126	56.1	44.1	46.2	46.6
Bridgend	131	118	124	117	50.0	44.2	46.6	44.5
The Vale of Glamorgan	100	97	91	109	38.7	36.6	34.3	42.1
Cardiff	268	273	245	263	46.1	45.3	41.3	44.4
Rhondda, Cynon, Taff	299	282	247	252	62.7	59.4	52.7	53.9
Merthyr Tydfil	57	77	62	68	47.3	64.3	52.2	56.8
Caerphilly	180	189	188	190	51.6	53.0	53.0	55.0
Blaenau Gwent	92	71	77	65	60.3	45.8	49.8	42.3
Torfaen	112	128	116	107	59.6	66.7	59.7	56.1
Monmouthshire	55	38	53	62	32.2	21.5	29.5	35.0
Newport	164	125	138	151	54.6	41.8	46.9	50.3
Wales	2,609	2,605	2,521	2,598	45.7	45.1	43.6	44.9

(a) Rate per 1,000 female residents aged 15-17.

Table 3 Conception rates for under 18s by region, England and Wales, 2001-2006 (a)

	2001	2002	2003	2004	2005	2006
North East	48.3	51.1	52.2	50.8	50.0	48.8
North West	45.1	45.3	45.1	45.7	46.6	44.2
Yorkshire and the Humber	47.1	47.0	46.7	47.3	47.7	46.7
East Midlands	40.2	40.4	41.2	40.8	40.2	39.7
West Midlands	47.2	47.0	47.4	45.2	45.5	46.5
East	34.2	34.6	33.3	32.7	32.7	33.3
London	50.3	52.8	51.8	49.2	46.0	45.6
South East	35.0	34.4	33.1	33.3	34.1	33.1
South West	37.1	35.3	34.1	34.3	34.0	33.0
England	42.5	42.7	42.2	41.6	41.3	40.6
Wales	45.5	46.0	45.7	45.1	43.6	44.9
England and Wales	42.7	42.9	42.4	41.8	41.4	40.9

(a) Rate per 1,000 female residents aged 15-17.

Table 4 Teenage conception rates by age group, England and Wales, 1992-2006

Year	England			Wales		
	Under 16 (a)	Under 18 (b)	Under 20 (c)	Under 16 (a)	Under 18 (b)	Under 20 (c)
1992	8.3	43.3	61.6	9.5	48.0	66.5
1993	8.0	42.1	59.4	8.9	47.5	65.6
1994	8.3	41.6	58.4	9.3	46.4	64.2
1995	8.5	41.6	58.3	10.3	48.0	65.8
1996	9.3	45.9	62.7	11.7	53.5	71.0
1997	8.8	45.5	62.2	10.4	52.2	69.2
1998	8.8	46.6	64.6	10.8	55.0	72.9
1999	8.2	44.8	62.7	9.6	51.1	69.3
2000	8.3	43.6	62.2	8.8	48.0	67.4
2001	8.0	42.5	60.7	8.7	45.5	62.8
2002	7.9	42.7	60.5	8.4	46.0	63.2
2003	7.9	42.2	59.8	8.1	45.7	62.8
2004	7.5	41.6	60.1	7.5	45.1	64.2
2005	7.8	41.3	59.9	7.9	43.6	63.1
2006	7.7	40.6	59.9	8.6	44.9	64.5

(a) Rate per 1,000 female residents aged 13-15

(b) Rate per 1,000 female residents aged 15-17

(c) Rate per 1,000 female residents aged 15-19

Table 5 Percentage of conceptions terminated by abortion, by age group, England and Wales, 1992-2006

Year	England				Wales			
	Under 16	Under 18	Under 20	All ages	Under 16	Under 18	Under 20	All ages
1992	48.8	39.5	34.2	19.5	46.2	33.6	28.2	16.0
1993	50.4	39.6	34.6	19.3	42.6	33.1	29.0	16.2
1994	50.6	40.2	35.1	19.6	45.3	33.4	29.2	16.4
1995	48.0	39.2	35.1	19.9	41.8	31.6	27.4	16.3
1996	49.6	40.5	36.7	21.0	44.1	33.6	29.8	17.4
1997	50.1	41.0	37.2	21.5	43.6	34.5	30.2	18.2
1998	52.9	42.4	38.2	22.4	46.1	35.8	31.6	19.4
1999	53.0	43.5	39.0	22.7	47.5	36.1	32.2	19.7
2000	54.5	44.8	39.8	22.9	46.5	34.7	31.9	19.7
2001	56.0	46.1	40.8	23.3	52.6	40.1	33.9	20.1
2002	55.7	45.8	40.4	22.7	53.5	38.6	33.0	19.4
2003	57.6	46.1	40.7	22.6	54.7	39.5	33.9	19.6
2004	57.6	46.0	40.5	22.6	49.3	38.5	33.2	19.1
2005	57.5	46.8	40.7	22.4	50.8	38.6	33.7	19.1
2006	60.2	48.8	42.3	22.4	53.0	42.6	35.6	20.1